

MICHIGAN'S COMMUNITIES IN THE

'90^S

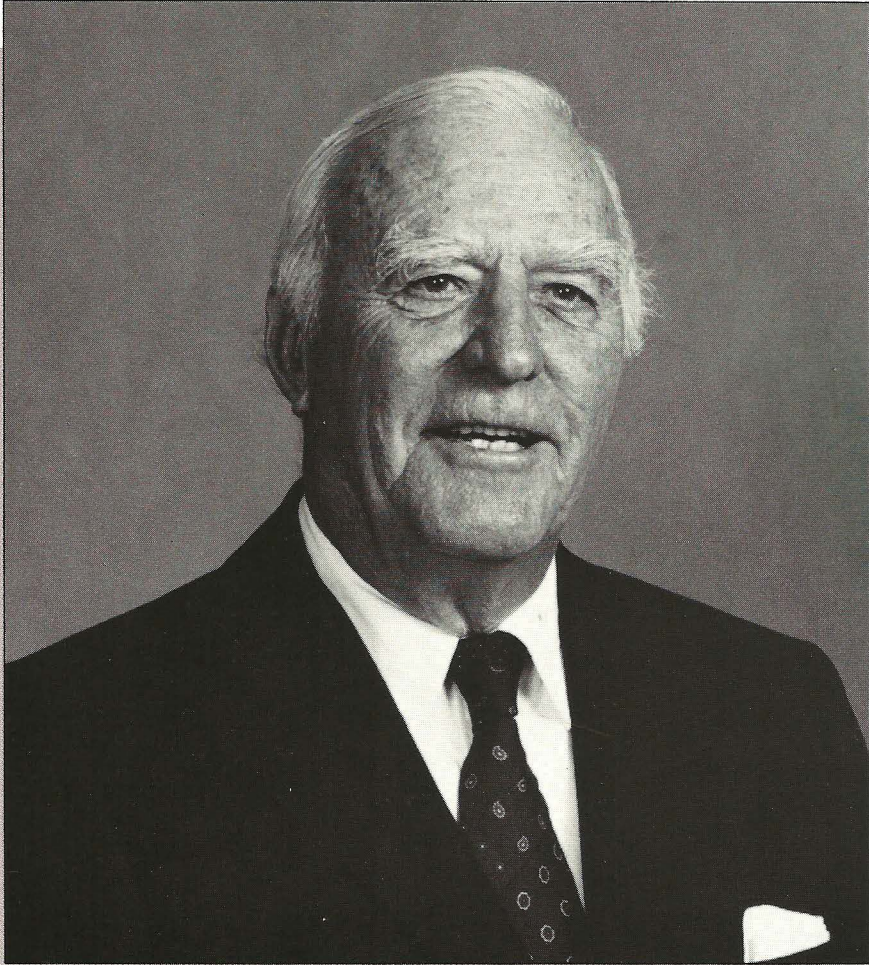
DIFFICULT CHALLENGES
EXCITING CHOICES

Detailed Program

**17th Annual Conference of the
Council of Michigan Foundations
November 8 - 10, 1989**

Hyatt Regency Hotel, Flint

Honorary Chairman



Charles Stewart Harding Mott

Last fall, Charles Stewart Harding Mott accepted the Honorary Chairmanship of the 17th Annual Council of Michigan Foundations Conference. He was enthusiastic about his foundation and corporate friends and colleagues visiting Flint, an area for which he cared deeply. His quiet leadership and foresight helped guide the Mott Foundation for more than 63 years. In 1963 he created his own foundation and was a long-time supporter of the purposes for which CMF was created.

Mr. Mott will be remembered for his evident love of life and mankind. He inspired, encouraged, and challenged the people he met. On behalf of the CMF Board of Trustees and Members the 17th Annual Conference is dedicated to his honor and his example.

"WELCOME"

*From the
Conference Committee*

Dear Foundation and Corporate Grantmakers:

It's a pleasure to welcome you to Flint. We hope, throughout the Conference, to educate, enlighten, and entertain you. The theme of the 17th Annual CMF Conference is "**Michigan's Communities in the 90s: Difficult Challenges/Exciting Choices**" and Flint is a perfect setting for a conference on building "community."

The Program Committee has artfully put together a program that will allow us to examine some of the critical issues and concerns of Michigan grantmakers. Our sessions have been planned to present a realistic picture of the challenges that face us and choices that can be made. This year's Host Committee has put together tours designed to showcase their city with a special evening which promises to demonstrate Flint's well-deserved reputation for promoting the arts.

We are pleased to have three programs cosponsored by the Community Foundation National Agenda of the Council on Foundations. Community foundations from neighboring states have been invited to attend our Conference this year; and the development, growth, and leadership of community foundations will be highlighted as we celebrate the 75th anniversary of our country's first community foundation - The Cleveland Foundation.

It has been a privilege chairing the Program Committee and Host Committee of the 17th Annual Conference of the Council of Michigan Foundations. We look forward to welcoming you back to Flint, to renewing acquaintances, and to making new ones.

Sincerely,

Patricia B. Johnson



Executive Director
Muskegon County
Community Foundation
PROGRAM CHAIR

Helen Philpott



Chairperson
Community Foundation
of Greater Flint
HOST COMMITTEE
CO-CHAIR

Willard J. Hertz



Vice President
Charles Stewart
Mott Foundation
HOST COMMITTEE
CO-CHAIR

NOVEMBER

S	M	T	W	T	F	S
			1	2	3	4
5	6	7	8	9	10	11
12	13	14	15	16	17	18
19	20	21	22	23	24	25
26	27	28	29	30		

Wednesday, November 8

2:00-
5:00 p.m.

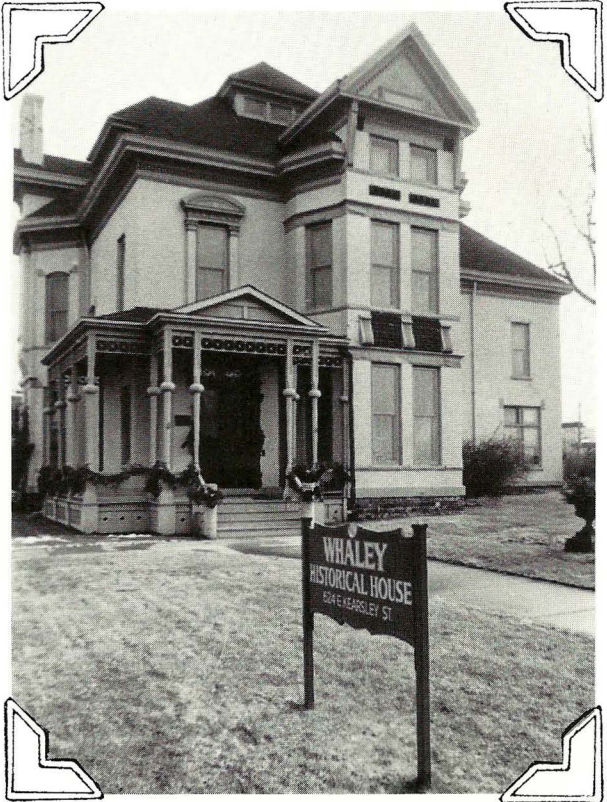
Flint Area Tours

(Advance reservation required.)

Conferees will meet at the main entrance of the Hyatt Regency where they will board a shuttle bus for the tour of their choice.

Historic Homes on Parade - Celebrate a city's heritage via this historic home tour that highlights the homes of a few of the dynamic leaders who made the Vehicle City great, including Applewood, the home of Mr. & Mrs. Charles Stewart Mott; Whaley Historical House, Italianate-styled structure; and the Nash House.

Tour Moderator: *Mary Lou Jenkins, Executive Director, Whaley Historical House*



Charles Stewart Mott Foundation - Walking tour of downtown Flint which includes a tour of the Mott Foundation offices.

Tour Moderator: *Pat Edwards, Program Officer, Charles Stewart Mott Foundation*



Crossroads Village - Michigan's history comes to life at historic Crossroads Village, where artisans and craftsmen go about their daily lives just as people did more than 100 years ago. Ride the Huckleberry Railroad back in time to this "living village" as it is being prepared for the holiday season. Dress warm and comfortably.

Tour Moderator: *Suzanne L. Feurt, Program Officer, Charles Stewart Mott Foundation*

S	M	T	W	T	F	S
			1	2	3	4
5	6	7	8	9	10	11
12	13	14	15	16	17	18
19	20	21	22	23	24	25
26	27	28	29	30		

*Makes Tour
Reservation!*



Medicine on the Cutting Edge - Magnetic Resonance Imaging is but one of many examples of cutting-edge medical technology available to the Flint community. See a demonstration of this highly successful procedure at the MRI Diagnostic Center. The tour will also include a visit to the Mott Children's Health Center to see how private philanthropy has helped the public health of an entire community, along with neonatal intensive care, cancer, geriatrics, and cardiovascular specialty units at Hurley Medical Center.

Tour Moderator: *Debbie Coleman, Public Relations Assistant, Hurley Medical Center*

Buick City - 1:00-3:00 p.m. Watch the Buick LeSabre assembled before your eyes as you tour General Motor's state-of-the-art facility, Buick City, Flint – one of the largest automobile manufacturing centers in the world – is a dynamic, diverse community that is proud of its heritage, yet actively building toward the future. No-where is this more evident than here where technology and teamwork are blended.

Tour Moderator: *H. Halladay Flynn, Executive Vice President-Development, Community Foundation of Greater Flint*

Wednesday, November 8

11:00 a.m.-
1:30 p.m.

Board of Trustees Meeting

Miami Suite, Concourse

12:00 noon-
7:30 p.m.

Conference Registration

East Foyer, Lobby Level

"Gathering Place"

Whiting Suite, Lobby Level

The Gathering Place is the meeting ground for Conference registrants and will include a variety of interesting features.
It is open throughout the Conference.

- ☐ CMF Exhibits
- ☐ Annual Report Display/Exchange
- ☐ Video Film Festival
- ☐ Foundation Center Regional Library Collection Display

View video presentations of CMF private and community foundation members and videos of grant projects. Check conference packet for schedule of film showing.

5:00-
5:30 p.m.

Conference and New Member Orientation

Fort Worth Suite, Concourse

New members and first-time conference registrants are invited to learn more about YOUR organization. Old friends are welcome as well, to exchange ideas with CMF officers, trustees and staff.

Speakers: **John E. Marshall III**, *Chairman, Council of Michigan Foundations; and President, The Kresge Foundation, Troy*

Dorothy A. Johnson, *President, Council of Michigan Foundations, Grand Haven*

6:00-
7:15 p.m.

Opening Reception

River Cafe (Lobby), Hyatt Regency Hotel

Welcome to Flint! Let our new spark and energy make your visit a grand one! You'll find the ambiance is relaxed and embracing at the beautiful 16-story Hyatt Regency Hotel.

**Reception hosted by: Charles Stewart Mott Foundation
Community Foundation of Greater Flint**

Music provided by Sherm Mitchell Trio

7:30-
9:30 p.m.

Dinner

Carriage Hall, Lobby Level

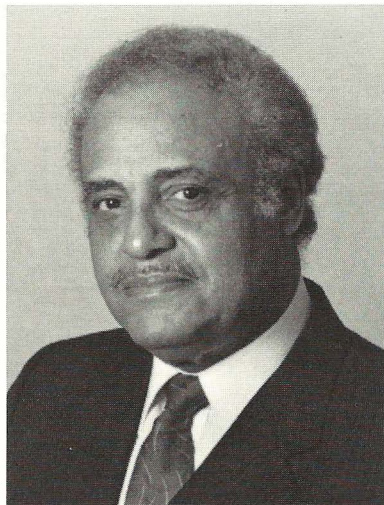
Michigan's Communities in the 90s: Difficult Challenges/Exciting Choices

Moderator: **John E. Marshall III**, *Chairman, Council of Michigan Foundations; and President, The Kresge Foundation, Troy*

Welcome:	Patricia B. Johnson , <i>17th Annual CMF Conference Program Chair; and Executive Director, Muskegon County Community Foundation</i>
Invocation:	Helen Philpott , <i>Co-chair, 17th Annual CMF Conference Host Committee; and Chairperson, Community Foundation of Greater Flint</i>
Introduction:	William S. White , <i>Chairman, President & CEO, Charles Stewart Mott Foundation, Flint</i>

Keynote Speaker

Benjamin L. Hooks *Executive Director,
National Association for the Advancement of Colored People, Baltimore, Maryland*



Executive director of the National Association for the Advancement of Colored People (NAACP) since 1977, Dr. Hooks' career has embraced the fields of law, ministry and public service.

He was co-founder and vice president of the Mutual Federal Savings and Loan Association of Memphis, Tennessee; was formerly an assistant public defender and general counsel; and in Shelby County, Tennessee, became the first black judge to serve on a court of record since the Reconstruction Era.

In 1972, President Nixon nominated Dr. Hooks as the first black member of the Federal Communications Commission . . . he served with the FCC until assuming his current post with the NAACP. He is an ordained minister . . . pastored churches in Memphis and Detroit.

Chairman of the Leadership Conference on Civil Rights, his board memberships have included the League of Women Voters, the Public Broadcasting Corporation, the National Alliance of Business, and the International League for Human Rights.

Dr. Hooks has appeared frequently on national news programs . . . "Meet the Press" . . . "Face the Nation" . . . "The MacNeil Lehrer Report" . . . has testified numerous times before Congressional committees . . . was instrumental in passage of the Voting Rights Extension, and the Martin Luther King Jr. Holiday Bill.

Born in Memphis, Tennessee, he attended LeMoyne-Owen College in Memphis, and Howard University in Washington, D.C. . . . earned his juris doctorate degree from DePaul University, Chicago, Illinois. A combat veteran of World War II, Dr. Hooks served with the Army's 92nd Infantry Division in Italy.

9:30 p.m.

Afterglow

River Cafe (Lobby), Hyatt Regency Hotel

Continue the mood

Gourmet coffee, tea, cordials and lite sweets will be served at the River Cafe.

Hosted by: The Flint Journal
 Michigan Bell Telephone Company

Music provided by Andrea Flodden

Thursday, November 9

7:00 a.m. – 6:30 p.m.	Conference Registration	East Foyer, Lobby Level
--------------------------	-------------------------	-------------------------

7:00 – 7:30 a.m.	Early Bird Coffee	Whiting Suite, Lobby Level
---------------------	-------------------	----------------------------

Those wishing to enjoy an early cup of coffee before the buffet breakfast are welcome to meet at the “Gathering Place.”

7:30 – 8:15 a.m.	Buffet Breakfast	Presentation Hall, Lobby Level
---------------------	------------------	--------------------------------

8:30 – 10:00 a.m.	Concurrent Sessions	
----------------------	---------------------	--

Community Development Track I	<i>Curtice/Chrysler/Nash Suites, Lobby Level</i>
Understanding Community Development	

The concept of community development, like many other new concepts, has become a buzz-word and it is often confused with concepts such as neighborhood development, community-based programs, and local initiatives. This session will define the concept of community development discuss why it is important as a strategy, and describe the community development process. Participants should leave with a common understanding of the concept and process of community development.

Moderator: **Tyrone R. Baines**, *Program Director, W.K. Kellogg Foundation, Battle Creek*

Speakers: **Pablo S. Eisenberg**, *President, Center for Community Change, Washington, DC*

Lance Buhl, *Manager, Corporate Contributions, BP America, Cleveland, Ohio*

Community Education Track I	<i>Sloan Suite, Lobby Level</i>
Values and Vocation: Community Options for Youth Education	

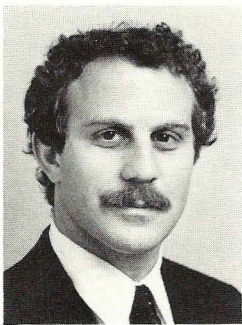
Providing our youth with a firm base of values and basic skills is an increasing challenge for Michigan communities. Society and the employer community expect schools to graduate youth who possess broad academic skills, self-management and behavioral and teamwork skills. The session will present new options in both public and private education that communities can use, and will demonstrate the key role corporations and foundations can play in revitalizing educational systems.

**Conference
Speakers:**

Marshall A. Acuff



Robert Barbera



Terry A. Barclay



Moderator: David B. Kennedy, *President, Earhart Foundation, Ann Arbor*

Speakers: Paul A. Pearson, *Director, Human Resources Development, Steelcase Corporation, Grand Rapids*

Joan Davis Ratteray, *President, Institute for Independent Education, Inc., Washington, DC*

James Vollman, *Executive Director, Detroit Compact*

Community Health Issues I

Randall Suite, Lobby Level

Providing Access to Health Care

It is estimated that approximately one million Michigan residents have limited access to health care services due to inadequate insurance coverage. This session will feature the findings and recommendations of The Governor's Task Force on Access to Health Care and offer innovative program initiatives that meet the health care needs of those that lack access to health care.

Moderator: W. Calvin Patterson III, *Executive Director, McGregor Fund, Detroit*

Speakers: David W. Benfer, *Chief Executive Officer, Henry Ford Hospital, Detroit*

Sandra Frank, *Director, Michigan Access Project, Department of Management & Budget, Lansing*

Scholarship Foundation Roundtable

Bougarts, Lobby Level

If your foundation, private, community or corporate, makes scholarship grants you will want to attend this session to exchange ideas on how to run a more effective program.

Moderator: Sharron Krieger, *Executive Director, Whirlpool Foundation, Benton Harbor*

Speaker: Richard Redden, *Information Specialist, Office of Financial Aid, Michigan State University, East Lansing*

10:00 -
10:30 a.m.

Refreshment Break

East Foyer, Lobby Level

10:30 a.m.-
12:00 p.m.

Concurrent Sessions

Community Development Track II

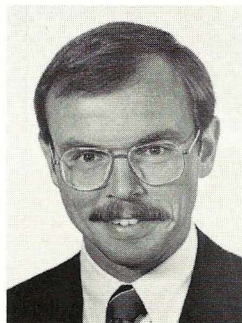
Curtice/Chrysler/Nash Suites, Lobby Level

Making Community Development Work

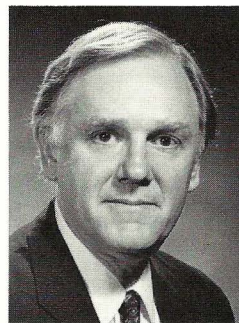
Three examples of successful community development initiatives in Michigan and around the country will be discussed. The focus will be on a description of what was done and the impact of these initiatives. Participants will have the opportunity to evaluate whether community development is a strategy that has potential for their foundation to fund.

**Conference
Speakers:**

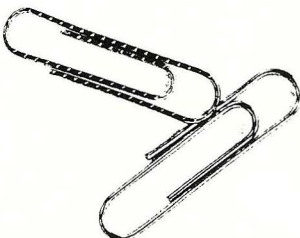
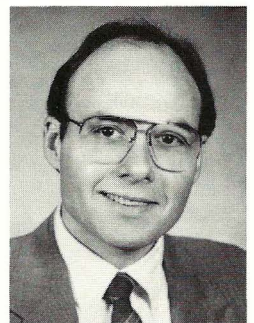
David W. Benfer



Lance Buhl



Gregory A. Chalille



Thursday, November 9

Moderator: David D. Gardiner, *Assistant Director, Kalamazoo Foundation*

Speakers: Maggie DeSantis, *Executive Director, Warren Conner Development Coalition, Detroit*

Kimi O. Gray, *Chairperson, Kenilworth Development Corporation, Washington, DC*

Hector L. Ortiz, *Executive Director, Comunidad en Action, New Britton, Connecticut*

Community Education Track II

Sloan Suite, Lobby Level

Human Investment: Life-Long Education to Meet Community Needs

Michigan's emerging Human Investment System will integrate the state's existing job training, adult education, and support programs. It is a direct response to the problems of adult illiteracy, worker retraining, and technical skills-building needed for the new jobs in the next 20 years. This session will review the expected local impact, the public policy principles behind the new system, and will showcase exemplary adult programs currently in operation.

Moderator: Glenn F. Kossick, *President, Metro Health Foundation, Detroit*

Speakers: Eleanor (Eli) De Ling Andrews, *Project Coordinator, Michigan Department of Education, Adult Extended Learning Services, Lansing*

Terry A. Barclay, *Executive Director, Operation ABLE of Michigan, Southfield*

Martin J. Simon, *Associate Director, Michigan Human Investment Fund, Lansing*

Community Health Issues II

Randall Suite, Lobby Level

Meeting the Needs of the Chronically Ill and Homebound

Chronically ill persons often require a variety of health care services provided in a non-traditional manner. This session will examine the needs of the chronically ill homebound (i.e. older adults, AIDS patients, and others) and feature community-based health care programs that address these needs. The session will also examine ways of assessing the quality of community-based programs for the chronically ill.

Moderator: Elizabeth C. Sullivan, *Program Officer, The Kresge Foundation, Troy*

Speakers: Warren W. Buckingham III, *Director, AIDS ARMS Network, Inc., Dallas, Texas*

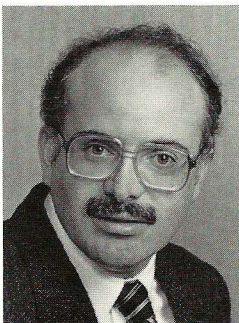
Timothy S. McIntyre, *Project Director, Area Agency on Aging - Region IV, St. Joseph*

Conference Speakers:

Gerard P. Charette

Joan Davis Ratteray

Eleanor De Ling Andrews



Private, corporate and community foundations must anticipate and respond to a dynamic legislative and regulative environment. This interactive session will offer participants an orientation to current legal and tax issues. It will also provide an actual case study of how one foundation effectively dealt with an IRS audit.

Moderator: **Lisa Wyatt Knowlton**, *Vice President, The Battle Creek Community Foundation*

Speakers: **John A. Edie**, *Vice President & General Counsel, Council on Foundations, Washington, DC*

Karen L. Leppanen, *Financial Services Officer, Community Foundation for Southeastern Michigan, Detroit*

12:30 -
2:00 p.m.

Plenary Luncheon

Presentation Hall, Lobby Level

Dilemmas - What They Mean to Grantmakers

Moderator: **Judith S. Hooker**, *Vice Chair, Council of Michigan Foundations; and Trustee, Robert L. & Judith S. Hooker Foundation, Grand Rapids*

Introduction: **Peter R. Ellis**, *Program Director, W.K. Kellogg Foundation, Battle Creek*

*Keynote
Speaker*



Michael Josephson

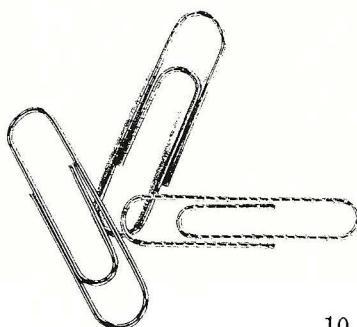
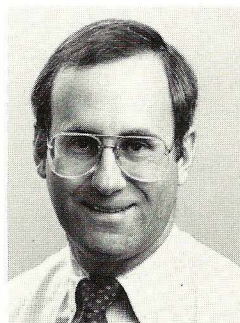
President, Josephson Institute for the Advancement of Ethics, Marina Del Rey, California

Josephson created the Josephson Institute for the Advancement of Ethics because of his commitment to increasing the nation's awareness of ethical issues. The Institute is unique in its role as a national leadership training organization in the field of ethics. Its workshops have engaged key decision makers in the fields of journalism, government, business, law, philanthropy, and the nonprofit community. He is also an advisor to corporations, government agencies, legal firms, and the media nationwide. Grantmakers will find his remarks are lively and provocative.

Conference Speakers:

John A. Edie

Pablo Eisenberg



2:30-
4:00 p.m.

Concurrent Sessions

Community Development Track III *Curtice/Chrysler/Nash Suites, Lobby Level* Getting Involved in Community Development

Although community development is a relatively new problem-solving strategy, it provides an opportunity for participation by a wide variety of private funders. This session will explore roles that community foundations, banks, corporations, and other foundations can play in the community development effort. It will also explore linkages between these organizations and community-based organizations. Participants will be able to explore and evaluate the role their organizations can play in community development.

Moderator and Speaker: **Ruth Goins**, *Program Associate, Charles Stewart Mott Foundation, Flint*

Speakers: **Gregory A. Chalille**, *Executive Director, The Oregon Community Foundation, Portland*

Elise J. Hoben, *Program Director, Local Initiatives Support Corporation, Kalamazoo*

Talton Ray, *President, Council for Community Based Development, New York City*

More on Ethics - Conversation With Michael Josephson

Dort/Durant Suites, Lobby Level

The session on ethics will feature a Donahue-style interactive panel discussion led by Michael Josephson of the Joseph & Edna Josephson Institute for the Advancement of Ethics concerning some of the major ethical issues involved in the grantmaking-grantseeking process. The panel will include representatives of both the foundation and nonprofit communities. The audience will be invited to participate and comment.

Moderator: **Peter R. Ellis**, *Program Director, W.K. Kellogg Foundation, Battle Creek*

Speaker: **Michael Josephson**, *President, Josephson Institute for the Advancement of Ethics, Marina Del Rey, California*

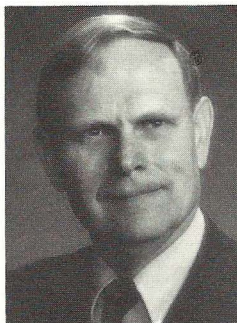
Panel: **Tyrone R. Baines**, *Program Director, W.K. Kellogg Foundation, Battle Creek*

Conference Speakers:

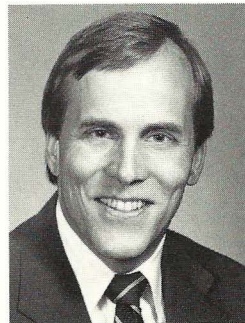
Elise J. Hoben




John H. Jacobson



Douglas M. Jansson





John S. Lore, *Senior Vice President, St. John Health Corporation, Detroit*

Karen M. MacArthur, *Executive Director, Fund Development, Delta College, University Center*

E.B. (Ted) Morley, Jr., *President, Morley Brothers Foundation, Saginaw*

Barbara Orr, *Executive Director, Detroit YWCA*

Elizabeth S. Upjohn, *Trustee, Kalamazoo Foundation*

The program will be videotaped for subsequent editing so it can be used as part of a Josephson Institute project funded by a grant from the W.K. Kellogg Foundation. The Institute will be working closely with the Council of Michigan Foundations to establish an ethical decision-making training program for staff and board members of grantmaking foundations and grantseeking nonprofit institutions.

**National Community Foundation
Development Track**

Sloan/Randall Suites, Lobby Level

"Small Communities - Great Community Foundations"

Eugene Struckhoff will discuss the models of growth he has developed as a result of a nationwide sample of community foundations serving smaller communities. Audience members will have an opportunity to interact with Mr. Struckhoff, and will learn how to develop their foundation. Private foundations interested in the rapid growth and development of community foundations will, also, find this session of interest.

This workshop is a part of the Council on Foundations National Agenda. Mr. Struckhoff is the former President of The Community Foundation of the Greater Baltimore Area, Inc.; and serves as Senior Consultant, Council on Foundations, Baltimore

Moderator: **Kathryn A. Agard**, *Program Director, Community Foundations, Council of Michigan Foundations, Grand Haven*

Speakers: **Suzanne L. Feurt**, *Program Officer, Charles Stewart Mott Foundation, Flint*

JoAnne Scanlon, *Director, Community Foundations National Agenda, Council on Foundations, Washington, DC*

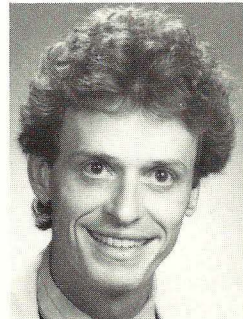
Eugene C. Struckhoff is the former President of The Community Foundation of the Greater Baltimore Area, Inc.; and serves as Senior Consultant, Council on Foundations, Baltimore, Maryland

**Conference
Speakers:**

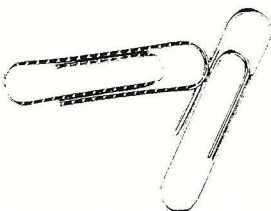
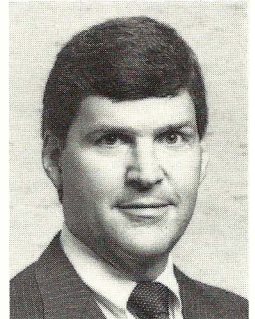
John Lore



Timothy S. McIntyre



Richard B. McLellan



Educating Michigan Nonprofit Leaders

Miami Suite, Concourse

The CMF Improving Philanthropy Committee will report on the two-year project which examined issues that are affecting Michigan nonprofit organizations and how educational institutions throughout the state might respond. Learn what you can do in your community to help these institutions educate volunteers and future nonprofit leaders.

Moderator: **Russell G. Mawby**, *Chairman & CEO, W.K. Kellogg Foundation; and Chairman, CMF Improving Philanthropy Committee, Battle Creek*

Presentors: **Continuing Education**—**John H. Jacobson**, *President, Hope College, Holland*
Experiential Learning—**Kelly Kellerman**, *Chairperson, Student Volunteer Bureau, Albion College*
Curriculum—**Richard J. Lewis**, *Dean, Graduate School of Business, Michigan State University, East Lansing*
Issue—**Linda B. Patterson**, *Program Associate, Improving Philanthropy Project, Council of Michigan Foundations, Grand Haven*
Research—**Sue Marx Smock**, *Dean, College of Urban, Labor, and Metropolitan Affairs, Wayne State University, Detroit*

Foundation Center Regional Collections
Annual Meeting

San Antonio Suite, Concourse

Representatives of Foundation Center Regional Collection Libraries will meet to discuss mutual concerns and interests.

3:30-
5:00 p.m.

Refreshment Break

East Foyer, Lobby Level

4:15-
5:00 p.m.

CMF Annual Members' Meeting

Presentation Hall, Lobby Level

Speakers: **John E. Marshall III**, *Chairman, Council of Michigan Foundations; and President, The Kresge Foundation, Troy*
Dorothy A. Johnson, *President*
Richard K. Rappleye, *Treasurer*
Judith S. Hooker, *Chair, Government Relations Committee*
Donald A. Lindow, *Vice President, National Bank of Detroit, Detroit*
Russell G. Mawby, *Chairman, Improving Philanthropy Committee*

Conference
Speakers:

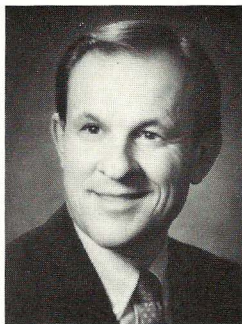
Eric T. Nord



Barbara Orr



Paul A. Pearson



*Dinner and
Entertainment
Tonight*

NOVEMBER

S	M	T	W	T	F	S
			1	2	3	4
5	6	7	8	9	10	11
12	13	14	15	16	17	18
19	20	21	22	23	24	25
26	27	28	29	30		

**5:15 -
6:00 p.m.**

Advisory Cabinet Meeting

Curtice/Chrysler/Nash Suites, Lobby Level

Past CMF Trustees will meet to evaluate the organization's progress and make suggestions for the future.

Chairman: **Russell G. Mawby**, *Chairman & CEO, W.K. Kellogg Foundation, Battle Creek*

**6:00 -
10:00 p.m.**

Reception, Dinner and Entertainment

Alfred P. Sloan Museum/Flint Institute of Arts/University of Michigan-Flint Theatre

Refer to pages 15 and 16 of program

**6:00 -
7:00 p.m.**

Cocktail reception at Alfred P. Sloan Museum

**7:15 -
8:30 p.m.**

Dinner at Flint Institute of Arts

8:30 p.m.

Begin boarding buses to the University of Michigan-Flint Theatre

9:00 p.m.

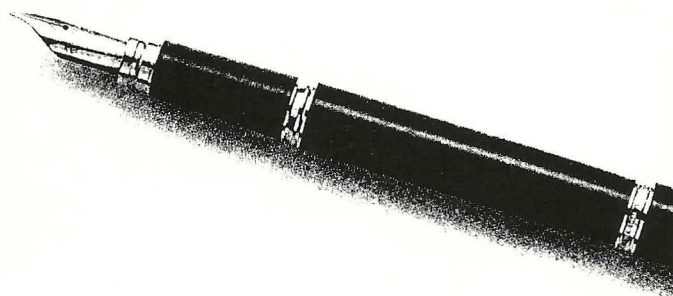
Flint Talent Showcase

(Shuttle service to reception and dinner will be continuous from 5:45 - 6:30 p.m. Following dinner participants will be bussed to the University of Michigan-Flint Theatre. At the conclusion of the performance, participants may walk two short blocks to the Hyatt Regency or take the shuttle.)

Vicki J. Rosenberg



Eugene Struckhoff



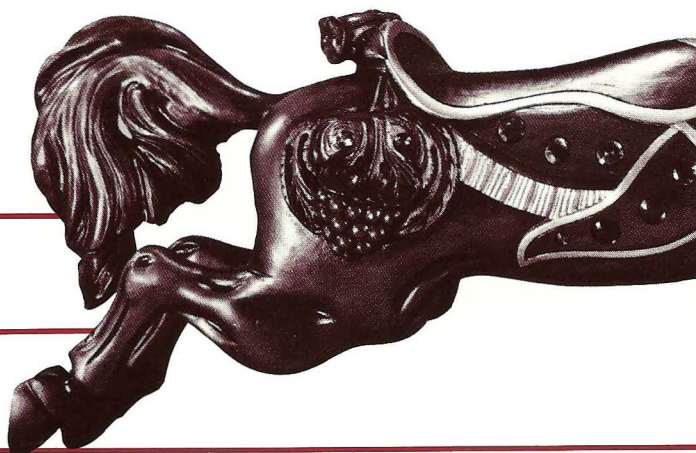
Thursday on the Town

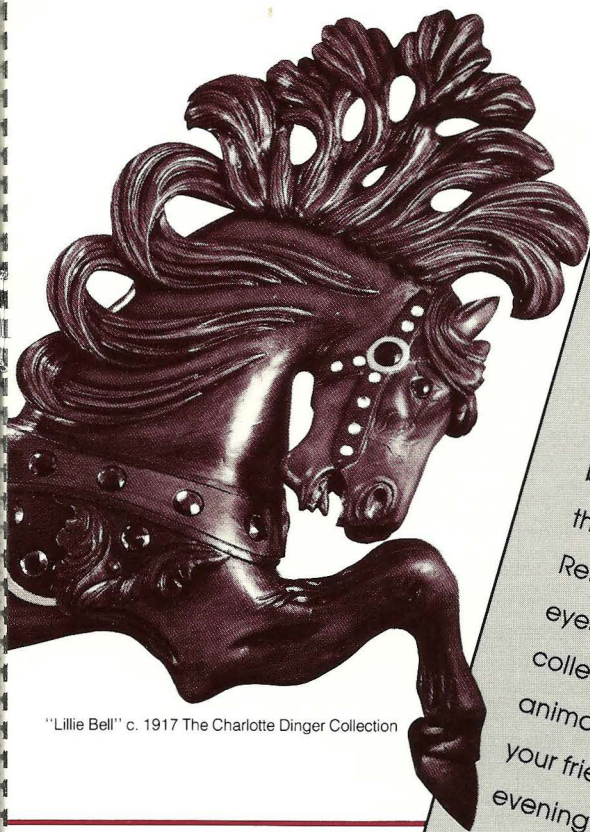
A r t

M u s i c

H i s t o r y

D e l i c i o u s D i n i n g





"Lillie Bell" c. 1917 The Charlotte Dinger Collection

Experience Flint's finest! From the dozens of cultural and entertainment opportunities throughout the city, we've picked three perennial favorites — for must-attend events on everyone's calendar — for your enjoyment. You'll explore museum exhibits that detail Genesee County's rich heritage — from Michigan's Ice Age to Billy Durant and the founding of General Motors . . . take a trip into yesteryear with a rare collection of antique automobiles . . . delight in the lively entertainment of homegrown blue-grass, dixieland jazz, and vocal artists. Along the way, you'll dine amid the classic elegance of a Renaissance collection of tapestries and feast your eyes on one of the world's most comprehensive collections of carved carousel horses and other animals. It all adds up to a great time for you and your friends. Join us as we step out for this fun-filled evening on the town. You won't want to miss it!!

6:00–7:00 p.m.

Cocktail Reception

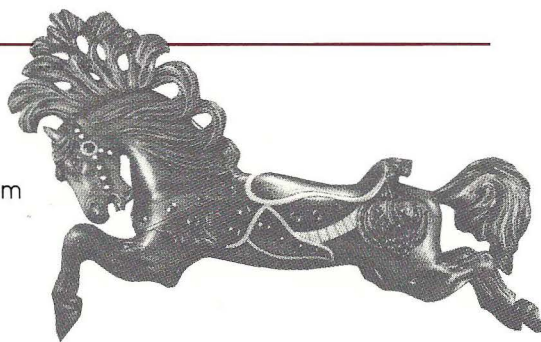
Alfred P. Sloan Museum

Hosts: Citizens Commercial & Savings Bank
Michigan National Bank
National Bank of Detroit-Genesee
Music by: Mary Margaret

7:15–8:30 p.m.

Dinner
Flint Institute of Arts
(directly across from museum)

"Catch a Brass Ring": Carousel Art from
the Charlotte Dinger Collection
(board shuttle buses
after dinner to Flint theatre)



9:00 p.m.

Flint Talent Showcase

University of Michigan-Flint Theatre

Bluegrass music by Wade and Julia Mainer
Jazz by the New Reformation Dixieland Band
Carolyn Mawby conducting the University of
Michigan-Flint Singers
Progressive Rock by Iodine Raincoats

7:00 a.m.- 12:30 p.m.	Conference Registration	East Foyer, Lobby Level
--------------------------	-------------------------	-------------------------

7:00 - 7:30 a.m.	Early Bird Coffee	Whiting Suite, Lobby Level
---------------------	-------------------	----------------------------

Those wishing to enjoy an early cup of coffee before the buffet breakfast are welcome to meet at the "Gathering Place."

7:00 - 8:15 a.m.	Community Foundation Breakfast Meeting	River Cafe, Lobby Level
---------------------	--	-------------------------

Yes, 7:00 a.m...you'll find lots of good news for community foundations.....Kellogg Community Foundation Youth Project, Mott Technical Assistance Program, Energy, and a special update on tax credit implementation.

- Moderator:** Kathryn A. Agard, Program Director, Community Foundations, Council of Michigan Foundations, Grand Haven
- Speakers:** Peter R. Ellis, Program Director, W.K. Kellogg Foundation, Battle Creek
- Suzanne L. Feurt, Program Director, Charles Stewart Mott Foundation, Flint
- Jane F. Morgan, Program Associate, Council of Michigan Foundations, Detroit

7:30 - 8:15 a.m.	Buffet Breakfast	Presentation Hall, Lobby Level
---------------------	------------------	--------------------------------

8:30 - 10:00 a.m.	Concurrent Sessions	
----------------------	---------------------	--

National Community Foundation Development Track I

Lessons Learned

(See individual subjects for room assignment)

Three experienced community foundation executives who serve on the Council on Foundations National Onsite Consulting Team will share the lessons they learned from their consultations across the country. The "nuts and bolts" session will give you an opportunity to raise issues with leaders in the field as they discuss: asset development, creative grantmaking, and management and investments.

This program is sponsored by the Council on Foundations Onsite Consulting Project.

Founding Community Foundations - Assets \$0 - 5 million	Minneapolis Suite, Concourse
--	------------------------------

- Introduction:** Lucy R. Allen, President & CEO, Saginaw Community Foundation
- Speaker:** Helen Monroe, Executive Director, San Diego Community Foundation, California

Growing Community Foundations -
Assets \$5-10 million

Palm Beach/Baltimore Suites, Concourse

Introduction: **James M. Richmond**, *President, Battle Creek Community Foundation*

Speaker: **Eugene C. Struckhoff** is the former President of The Community Foundation of the Greater Baltimore Area, Inc.; and serves as Senior Consultant, Council on Foundations, Baltimore, Maryland

Managing Community Foundations -
Assets \$10 million + +

Fort Worth Suite, Concourse

Introduction: **John E. Hopkins**, *Executive Director, Kalamazoo Foundation*

Speaker: **Douglas M. Jansson**, *Executive Director, The Rhode Island Foundation, Providence*

Corporate Giving Session I
Corporate CEOs' Attitudes on Giving

Curtice/Chrysler/Nash Suites, Lobby Level

What do CEOs think about "giving" in today's environment? Results of discussions with 255 CEOs and 100 next generation CEOs will be presented. What does the pressure on profits, new ownerships and the "lean and mean" philosophy mean to the future of corporate giving?

Commissioned by the Council on Foundations, the study was undertaken by The Daniel Yankelovich Group, Inc.

Moderator: **Donald A. Lindow**, *Vice President, National Bank of Detroit, Detroit*

Speaker: **Alice Buhl**, *Senior Vice President, Council on Foundations, Washington, DC*

Responder: **Lawrence C. Hoff**, *President & Chief Operating Officer, The Upjohn Company, Kalamazoo*

Investment Seminar I
Investment Outlook for the 90s

Carriage A, Lobby Level

The 90s will bring a new decade, new challenges and exciting times in the equity and bond markets. This session will look at how you can best allocate limited resources to provide for unlimited needs.

Moderator: **John S. Snyder**, *Vice President-Trust Investment, Comerica Bank, Detroit*

Speakers: **A. Marshall Acuff**, *Senior Vice President & Managing Director, Smith Barney, Inc., New York City*

Robert Barbera, *Senior Economist, Shearson Lehman Hutton, Inc., New York City*

The Necessity of the Arts to the Community

Pioneer Suite, Concourse

This session will provide some measure of the important role the arts play in the life of any community. It will explore ways to determine grant monies for the arts and will discuss needs relative to other communities.

Moderator: **David B. LaClaire**, *Vice Chairman, Grand Rapids Foundation*

Speaker: **Vicki Rosenberg**, *Grants Program Officer, Getty Center for Education in the Arts, Douglas*

Conversation With John A. Edie

Bishop Suite, Concourse

An opportunity to talk with John A. Edie, Vice President & General Counsel, Council on Foundations about YOUR foundations' legal and tax concerns.

Introduction: Richard K. Rappleye, Vice President, Secretary/Treasurer, Charles Stewart Mott Foundation, Flint

Speaker: John A. Edie, Vice President & General Counsel, Council on Foundations, Washington, DC

10:00 a.m. Refreshment Break East Foyer, Lobby Level

10:30 a.m. - 12:00 p.m. Concurrent Sessions

National Community Foundation Development Track II Regency Ballroom

Issues of Leadership

Using themes from the soon to be published book *An Agile Servant*, this session will explore the issues involved with the community foundation and its publics: grantseekers, the community, and donors. Special attention will be given to the relationship with donors exploring why they choose the community foundation. This session is developed from the work of the Council on Foundations National Leadership Project.

Moderator: Mariam C. Noland, Executive Director, Community Foundation for Southeastern Michigan, Detroit

Speakers: Steven A. Minter, Chairman, Leadership Committee, Council on Foundations; and Executive Director, Cleveland Foundation, Ohio
Eric T. Nord, Chairman, Nordsen Corporation, Amhurst, Ohio

Corporate Giving Session II Curtice/Chrysler/Nash Suites, Lobby Level
Corporate Volunteerism: The State of the Art

A session to provide national and statewide reviews of corporate volunteerism programs, policies and practices. Emphasis will be on how corporations are evolving in their commitment to and development of volunteerism programs.

Moderator: Mary E. Bradish, Public Affairs Specialist, Michigan Consolidated Gas Company, Detroit

Speakers: Nancy Goldberg, Associate Director, Center for Corporate Community Relations, Boston College, Chestnut Hill, Massachusetts
Ann Hoag, Executive Director, Leadership Detroit, Greater Detroit Chamber of Commerce

Investment Seminar II Carriage A, Lobby Level
Benefits Your Community Can Get From the Free Trade Agreement - If You Are Ready

Learn the history of the trade arrangements between Canada and the U.S. and the Free Trade Agreement . . . potential impact on U.S. companies . . . potential impact on a Canadian company . . . courses of action to be followed by U.S. businesses and communities . . . how will Michigan be affected? Who comes out ahead, or does everyone benefit?

Moderator: **E. Philip Farley**, *Executive Vice President - Trust Services, Old Kent Bank & Trust Company, Grand Rapids*

Speakers: **Gerard P. Charette**, *Attorney, Wilson, Walker, Hochberg & Slopen, Windsor, Ontario, Canada*

Richard B. McLellan, *Senior Partner, Dykema, Gossett, Lansing*

Conversation With Norman A. Brown

Bishop Suite, Concourse

What does the chief program responsibility at a foundation with assets of more than \$3 billion mean? This is an opportunity to talk with Dr. Norman A. Brown, President & Trustee, about any of the W.K. Kellogg Foundation's interests - youth, leadership, science education, South Africa, etc.

Introduction: **Ranny Riecker**, *President, Harry A. & Margaret D. Towsley Foundation, Midland*

Speaker: **Norman A. Brown**, *President, W.K. Kellogg Foundation, Battle Creek*

**12:15 -
2:00 p.m.**

Closing Luncheon

Presentation Hall, Lobby Level

Donor's Platform



*Keynote
Speaker*

Frances Hesselbein

**National Executive Director
Girl Scouts U.S.A.**

Mrs. Hesselbein began her career with the Girl Scouts as a troop leader in Johnstown, Pennsylvania, and is the first chief executive officer to be chosen from within the ranks of the organization.

Acclaimed by management consultant Peter Drucker as "the ablest executive in the United States today," Mrs. Hesselbein oversees a 669,000-member adult workforce, of whom 99 percent are volunteers. Under her direction, the Girl Scouts have begun an innovative program of corporate planning and management that includes training developed by the faculty of the Harvard Business School.

Mrs. Hesselbein received the first Entrepreneurial Woman Award for Excellence in not-for-profit management, and was the first female recipient of the United Way's National Professional Leadership Award. In 1987, she received an Honorary Doctorate of Humane Letters from Buena Vista College in Storm Lake, Iowa.

Her board memberships include the Individual Investor Advisory Committee to the Board of Directors of the New York Stock Exchange; the board of governors of the Josephson Institute for the Advancement of Ethics, Marina Del Rey, California; and the board of trustees of Juniata College in Huntingdon, Pennsylvania.

Moderator: **John E. Marshall III**, *Chairman, Council of Michigan Foundations; and President, The Kresge Foundation, Troy*

Introduction: **Patricia B. Johnson**, *17th Annual CMF Conference Program Chair; and Executive Director, Muskegon County Community Foundation*



17th Annual Conference Program Committee

Honorary Chairman: Charles Stewart Harding
Mott, *Chairman Emeritus, Charles Stewart Mott
Foundation, Flint* (deceased)
Program Chair: Patricia B. Johnson, *Executive
Director, Muskegon County Community
Foundation, Muskegon*

Kathryn A. Agard, *Program Director, Community
Foundations, Council of Michigan Foundations,
Grand Haven*

Tyrone R. Baines, *Program Director, W.K. Kellogg
Foundation, Battle Creek*

E. Philip Farley, *Executive Vice President, Trust
Administration, Old Kent Bank and Trust
Company, Grand Rapids*

Robert A. Fisher, *President, Frank S. & Mollie S.
VanDervoort Memorial Foundation, Lansing*

David D. Gardiner, *Assistant Director, Kalamazoo
Foundation, Kalamazoo*

Robert E. Hency, *Director of Dissemination &
Communications, W.K. Kellogg Foundation,
Battle Creek*

Willard J. Hertz, *Vice President, Charles Stewart
Mott Foundation, Flint*

Sandra G. Hussey, *Member Services Director,
Council of Michigan Foundations, Grand Haven*

Donald A. Johnson, *Chairman, JSJ Foundation,
Grand Haven*

Dorothy A. Johnson, *President, Council of Michigan
Foundations, Grand Haven*

David B. Kennedy, *President, Earhart Foundation,
Ann Arbor*

Glenn F. Kossick, *President, Metro Health
Foundation, Detroit*

David B. LaClaire, *Vice Chairman, Grand Rapids
Foundation, Grand Rapids*

John E. Marshall III, *President, The Kresge
Foundation, Troy*

Helen Philpott, *Chairperson, Community
Foundation of Greater Flint, Flint*

James M. Richmond, *President, The Battle Creek
Community Foundation, Battle Creek*

R. Sue Smith, *Manager, Alcohol Education
Programs, The Stroh Brewery Company, Detroit*

John Snyder, *Vice President, Personal Trust,
Comerica Incorporated, Detroit*

Eileen C. Starks, *President, Midland Foundation,
Midland*

Elizabeth C. Sullivan, *Program Officer, The Kresge
Foundation, Troy*

Host Committee Members

Helen Philpott, (Co-Chair), *Chairperson,
Community Foundation of Greater Flint, Flint*
Willard J. Hertz, (Co-Chair), *Vice President, Charles
Stewart Mott Foundation, Flint*

John L. Asselin, *Vice President, Citizens
Commercial & Savings Bank, Flint*

David Doherty, *Vice President, GMI-Engineering &
Management, Flint*

Patricia Edwards, *Program Officer, Charles Stewart
Mott Foundation, Flint*

Suzanne L. Feurt, *Program Officer, Charles Stewart
Mott Foundation, Flint*

H. Halladay Flynn, *Executive Vice President-
Development, Community Foundation of Greater
Flint, Flint*

Dan Gaydou, *Publisher, The Flint Journal, Flint*
Eugene Grice, *President, James A. Welch
Foundation, Flint*

Helen B. Harris, *Trustee, Community Foundation of
Greater Flint, Flint*

Sandra G. Hussey, *Member Services Director,
Council of Michigan Foundations, Grand Haven*
James R. Kettler, *Vice President, James A. Welch
Foundation, Flint*

Beverly King, *Director, Flint Area Convention and
Visitors Bureau, Flint*

Malcolm MacLean, *Administrator, Hougen
Foundation, Flint*

Webb F. Martin, *Senior Vice President, NBD
Genesee Bank, Flint*

Susan Piper, *Executive Director, Mallery Charitable
Trust, Flint*

Duane Poole, *Director of Public Relations, GM
Service Parts Operations, Flint*

M. Joseph Roberson, *President, Grand Blanc
Community Foundation, Grand Blanc*

Bridgette Ryan, *Program Officer, Charles Stewart
Mott Foundation, Flint*

Judy Samelson, *Director of Communications,
Charles Stewart Mott Foundation, Flint*

David K. Swenson, *Executive Vice President-
Administration, Community Foundation of
Greater Flint, Flint*

Jack W. Thompson, *Trustee, Frances S. Wilson
Charitable Trust, Flint*

Deborah Tuck, *Executive Director, Ruth Mott Fund,
Flint*

Arthur L. Tuuri, *President, Community Foundation
of Greater Flint, Flint*

Sarah Warner, *Executive Director, Greater Flint
Arts Council, Flint*

William S. White, *Chairman, President & CEO,
Charles Stewart Mott Foundation, Flint*

C. Edward White, Jr., *Treasurer, Charles Stewart
Mott Foundation, Flint*

Board of Trustees & Officers

Officers:

John E. Marshall III, *Chairman*
Donald A. Lindow, *Vice Chairman-Corporate*
Judith S. Hooker, *Vice Chairman-Private*
Mariam C. Noland, *Vice Chairman-Community*
Richard K. Rappleye, *Treasurer*
Dorothy A. Johnson, *President & Secretary*

Board of Trustees:

Leo J. Brennan, Jr., *Executive Director, Ford Motor
Company Fund, Dearborn*
Malcolm G. Dade, Jr., *Vice President - Human
Resources, Detroit Edison, Detroit*
Herbert H. Dow, *President, Herbert H. & Grace A.
Dow Foundation, Midland*
Nichols M. Gabriel, *Comptroller, The Ford
Foundation, New York*
Robert E. Hency, *Director of Dissemination &
Communications, W.K. Kellogg Foundation,
Battle Creek*
Willard J. Hertz, *Vice President, Charles Stewart
Mott Foundation, Flint*

Judith S. Hooker, *Trustee, Robert L. & Judith S. Hooker Foundation, Grand Rapids*
 Gilbert Hudson, *President, Hudson-Webber Foundation, Detroit*
 Patricia B. Johnson, *Executive Director, Muskegon County Community Foundation, Muskegon*
 Ted L. Johnson, *President Emeritus, The Fremont Area Foundation, Fremont*
 Howard D. Kalleward, *Trustee, Dorothy U. Dalton Foundation, Kalamazoo*
 Donald A. Lindow, *Vice President, National Bank of Detroit, Detroit*
 John E. Marshall III, *President, The Kresge Foundation, Troy*
 Mariam C. Noland, *Executive Director, Community Foundation for Southeastern Michigan, Detroit*
 W. Calvin Patterson III, *Executive Director, McGregor Fund, Detroit*
 Carl F. Reitz, *Secretary, Besser Foundation, Alpena*
 Margaret A. Riecker, *President, Harry A. & Margaret D. Towsley Foundation, Midland*
 Leonard W. Smith, *President, The Skillman Foundation, Detroit*
 Stephen E. Upton, *President, Whirlpool Foundation, Benton Harbor*
 William V. Weatherston, *Vice President, The Stroh Brewery Company, Detroit*
 Peter M. Wege, *Vice Chairman/Trustee, Steelcase Corporation/Steelcase Foundation, Grand Rapids*

Advisory Cabinet

Russell G. Mawby, *Chairman & CEO, W.K. Kellogg Foundation, Battle Creek*
 Sue Blandford, *Friend & Former Chairman, Grand Rapids Foundation, Grand Rapids*
 Nathan B. Driggers, *President, Harder Foundation, East Detroit*
 Allan J. Fletcher, *Vice President, Comerica Incorporated, Grosse Pointe*
 Herman F. Gertz, *President, Herman & Irene Gertz Foundation, Monroe*
 Thomas W. Herbert, *Vice President & Treasurer, The Kresge Foundation, Troy*
 Miles Jaffe, *Esq., Honigman, Miller, Schwartz & Cohn, Detroit*
 Keith D. Jensen, *President, The Jensen Foundation, Ann Arbor*
 James R. Kettler, *Vice President, James A. Welch Foundation, Flint*
 Evelyn Machtel, *Vice President, Jack F. Wolfram Foundation, Lansing*
 Robert B. Miller, *Chairman, The Miller Foundation, Battle Creek*
 James M. Richmond, *President, The Battle Creek Community Foundation, Battle Creek*
 Robert A. Risselade, *Trustee, The Wege Foundation, Grand Rapids*
 Herbert F. Spieler, *Manager of Public Affairs, Consumers Power Company, Jackson*
 Anthony T. Sullivan, *Secretary, Earhart Foundation, Ann Arbor*
 Alfred H. Taylor, Jr., *Chairman, The Kresge Foundation, Troy*
 Cleveland Thurber, Jr., *Senior Vice President, Comerica Incorporated, Detroit*
 William S. White, *Chairman, President & CEO, Charles Stewart Mott Foundation, Flint*
 Sally J. Yerex, *Second Vice President, National Bank of Detroit, Florida*

Council of Michigan Foundations' Members

Private Foundations

Talbert & Leota Abrams Foundation
 The Acme Foundation
 Allen Foundation, Inc.
 Americana Foundation
 Claude D. & Etta H. Andrews Foundation
 William R. Angell Foundation
 Charles Shirley Avery Foundation
 Baldwin Foundation
 Barstow Foundation
 Charles M. Bauervic Foundation
 Bauervic-Paisley Foundation
 Joseph E. Beauchamp Charitable Trust
 Alvin M. Bentley Foundation
 Besser Foundation
 Guido A. & Elizabeth H. Binda Foundation
 Max D. & Constance M. Boersma Charitable Trust Foundation
 Arnold & Gertrude Boutell Memorial Fund
 Charles & Jessie Brackett Memorial Scholarship Fund
 Viola E. Bray Charitable Trust
 Samuel Higby Camp Foundation
 William & Mary Carls Foundation
 Gerald W. Chamberlin Foundation, Inc.
 Dorothy U. Dalton Foundation
 Detroit Neurosurgical Foundation
 The Charles DeVlieg Foundation
 The Richard M. & Helen DeVos Foundation
 Dexter Industries Charitable Trust
 Dexter Charitable Trust Fund
 The Herbert D. & Junia Doan Foundation
 Herbert H. & Barbara C. Dow Foundation
 The Herbert H. & Grace A. Dow Foundation
 Dyer-Ives Foundation
 Earhart Foundation
 Earl-Beth Foundation
 C.K. Eddy Family Memorial Fund
 Glenn D. Curtis Edmore Trust
 Erickson Foundation
 The J.F. Ervin Foundation
 H.T. Ewald Foundation
 John E. Fetzer Foundation
 George R. & Elise M. Fink Foundation
 Fisher-Insley Foundation
 Ford Foundation
 The Frey Foundation
 Gannett Foundation
 The Rollin M. Gerstacker Foundation
 Herman & Irene Gertz Foundation
 Irving S. Gilmore Foundation
 Gordy Foundation, Inc.
 The Gornick Fund
 Granger Foundation
 Harder Foundation
 Charles Stewart Harding Foundation
 The Harris Foundation
 Havirmill Foundation
 Health Education Foundation
 Heartland Foundation
 David M. & Joyce F. Hecht Foundation
 Myrtle E. & William G. Hess Charitable Trust
 The Clarence & Jack Himmel Foundation
 James & Lynelle Holden Fund
 Robert L. & Judith S. Hooker Foundation
 Hougen Foundation

Hudson-Webber Foundation
 Edward F. & Irma Hunter Foundation
 The Hurst Foundation
 The Iacocca Foundation
 India Foundation
 Michael Jeffers Memorial Fund
 The Jensen Foundation
 Jewish Community Foundation
 The Kantzler Foundation
 Kaufman Foundation
 The Miner S. & Mary Ann Keeler Fund
 W.K. Kellogg Foundation
 Kellogg Company 25-Year Employees' Fund, Inc.
 Elizabeth E. Kennedy Fund
 Knight Family Charitable & Educational Foundation
 Sam & Jane Kravitz Foundation
 The Kresge Foundation
 The Greater Lansing Foundation
 The Lee Foundation
 The Lexo Charitable Trust
 Loosemore Foundation
 The Loutit Foundation
 Edward Lowe Foundation
 The Lyon Foundation, Incorporated
 Mallery Charitable Trust
 Alex & Marie Manoogian Foundation
 McColl-Batts Foundation
 McCurdy Memorial Scholarship Foundation
 McGregor Fund
 B.D. & Jane E. McIntyre Foundation
 C.S. & Marion F. McIntyre Foundation
 W.D. & Prudence A. McIntyre Foundation
 McKinley Foundation
 Orville D. & Ruth A. Merillat Foundation
 Metro Health Foundation
 Allen H. Meyers Foundation
 The Miller Foundation
 Louise Tuller Miller Trust
 Francis Goll Mills Fund
 Monroe-Brown Foundation
 Morley Brothers Foundation
 Charles Stewart Mott Foundation
 Ruth Mott Fund
 Mukti Fund
 T.B. Murphy Foundation Charitable Trust
 Allen E. & Marie A. Nickless Memorial Foundation
 Oscar P. & Louise H. Osthelder Charitable Foundation
 William M. & Mary E. Pagel Trust
 Elsa U. Pardee Foundation
 The Power Foundation
 The Meyer & Anna Prentis Family Foundation, Inc.
 Prince Foundation
 The Pryor Foundation
 Robbins Foundation
 Harold & Carolyn Robison Foundation
 Rotary Charities of Traverse City
 May Mitchell Royal Foundation
 Sage Foundation
 Schwartz Family Foundation
 Emily Scofield Scholarship Fund
 The Sebastian Foundation
 The Nate S. & Ruth B. Shapero Foundation
 The Shiffman Foundation
 Simpson Foundation
 The Skillman Foundation
 George M. & Mabel H. Slocum Foundation
 Jack D. & Freda S. Sparks Foundation
 The Edward C. & Hazel L. Stephenson Foundation

The Helmut Stern Foundation
 The Charles J. Strosacker Foundation
 The Keith W. Tantlinger Foundation
 W.B. & Candace Thoman Foundation
 Mary Thompson Foundation
 The Tiscornia Foundation, Inc.
 Harry A. & Margaret D. Towsley Foundation
 The Trico Foundation
 The Harold & Grace Upjohn Foundation
 W.E. Upjohn Institute for Employment Research
 Frederick S. Upton Foundation
 Frank S. & Mollie S. VanDervoort Memorial Foundation
 Van Valkenburg Foundation
 Vicksburg Foundation
 Vogt Foundation
 John & Rose Watson Scholarship Foundation
 The Wege Foundation
 The James A. Welch Foundation
 Samuel L. Westerman Foundation
 The Wetsman Foundation
 The John & Elizabeth Whiteley Foundation
 David M. Whitney Fund
 Wickson-Link Memorial Foundation
 Wigginton Educational Foundation
 Matilda R. Wilson Fund
 Isadore & Beryl Winkelman Foundation
 Winship Memorial Scholarship Foundation
 The Wolohan Family Foundation

Community Foundations

Albion Civic Foundation
 Ann Arbor Area Foundation
 The Battle Creek Community Foundation
 Bay Area Community Foundation
 Berrien Community Foundation
 Buchanan Area Foundation
 Cadillac Area Community Foundation
 Capital Region Community Foundation
 Civic Foundation of Chelsea
 Community Foundation for Southeastern Michigan
 Community Foundation of Greater Flint
 Community Heritage Foundation of Eaton Rapids
 Four County Foundation
 Greater Frankenmuth Area Community Foundation
 The Fremont Area Foundation
 Grand Blanc Community Foundation
 Grand Haven Area Community Foundation
 Grand Rapids Foundation
 Grosse Pointe Park Foundation
 Holland Community Foundation
 The Jackson Foundation
 Kalamazoo Foundation
 Leelanau Township Foundation
 Ludington Area Foundation
 Manistee County Foundation
 Marcellus Community Foundation
 The Marquette Community Foundation
 Marshall Civic Foundation
 Midland Foundation
 Community Foundation of Monroe County
 Muskegon County Community Foundation
 Northeast Michigan Community Foundation
 Greater Rochester Area Community Foundation
 Community Foundation of St. Clair County
 Saginaw Community Foundation
 Shiawassee Foundation

Banks

Chemical Bank & Trust Company, Midland
Citizens Commercial & Savings Bank, Flint
Citizens Trust, Ann Arbor
Comerica Incorporated, Detroit
First of America-Michigan, Kalamazoo
Manufacturers National Bank of Detroit, Detroit
Michigan National Bank, Grand Rapids
NBD Genesee Bank, Flint
NBD Grand Rapids, N.A., Grand Rapids
National Bank of Detroit, Detroit
Old Kent Bank & Trust Company, Grand Rapids
Old Kent Bank of Kalamazoo, Kalamazoo
Second National Bank, Saginaw

Corporate Foundations & Corporations

Aeroquip Foundation
Allied Automotive
Ameritech Publishing, Inc.
ANR Pipeline Company
The Borman's, Inc. Fund
The Bundy Foundation
Chrysler Corporation Fund
Consumers Power Company
Dayton Hudson Department Store Company
Detroit Edison Foundation
Domino's Foundation
The Dow Chemical Company Foundation

Dow Corning Foundation
Federal-Mogul Corporation Charitable Trust
Fibre-Converters Foundation, Inc.
Ford Motor Company Fund
GTE Telephone Operations, North Area
General Motors Foundation
The Gerber Companies Foundation
JSJ Foundation
Kellogg Company
Kowalski Sausage Charitable Trust
Kysor Industrial Corporation Foundation
Lacks Enterprises, Inc.
La-Z-Boy Chair Foundation
Little Caesars Enterprises
Masco Corporation Charitable Trust
Mervyn's
Michigan Bell Telephone Company
MichCon Foundation
Michigan Health Care Education & Research Foundation, Inc.
Herman Miller, Inc.
Monroe Auto Equipment Foundation Trust
SPX Foundation
Simpson Industries Fund
Steelcase Foundation
The Stroh Brewery Company
A.M. Todd Company Foundation
Trans Continental Airlines-Airtrust Foundation
UNISYS
The Upjohn Company
Whirlpool Foundation



Program Session Checklist

Wednesday, November 8

11:00 a.m. – 7:30 p.m. **Registration**—*East Foyer, Lobby Level*
Gathering Place—*Whiting Suite, Lobby Level*
11:00 a.m. – 1:30 p.m. **Board of Trustees Meeting**—*Miami Suite, Concourse*
1:00 – 3:00 p.m. **Buick City** – **Flint Area Tour**
2:00 – 5:00 p.m. **Flint Area Tours**
Medicine on the Cutting Edge
Historic Homes on Parade
Crossroads Village
Charles Stewart Mott Foundation
5:00 – 5:30 p.m. **Conference & New Member Orientation**—*Fort Worth Suite, Concourse*
6:00 – 7:15 p.m. **Opening Reception**—*River Cafe, Hyatt Regency Lobby*
7:30 – 9:30 p.m. **Dinner & Keynote Address**—*Carriage Hall, Lobby Level*
9:30 p.m. **Afterglow**—*River Cafe, Hyatt Regency Lobby*

Thursday, November 9

7:00 a.m. – 6:30 p.m. **Registration**—*East Foyer, Lobby Level*
7:00 – 7:30 a.m. **Early Bird Coffee**—*Whiting Suite, Lobby Level*
7:30 – 8:15 a.m. **Buffet Breakfast**—*Presentation Hall, Lobby Level*
8:30 – 10:00 a.m. **Community Development Track I**—*Curtice/Chrysler/Nash Suites, Lobby Level*
Community Education Track I—*Sloan Suite, Lobby Level*
Community Health Issues I—*Randall Suite, Lobby Level*
Scholarship Foundation Roundtable—*Bougarts, Lobby Level*
10:00 – 10:30 a.m. **Refreshment Break**—*East Foyer, Lobby Level*
10:30 a.m. – 12:00 noon **Community Development Track II**—*Curtice/Chrysler/Nash Suites, Lobby Level*
Community Education Track II—*Sloan Suite, Lobby Level*
Community Health Issues II—*Randall Suite, Lobby Level*
The Tax Man Cometh—*Dort/Durant Suites, Lobby Level*
12:30 – 2:00 p.m. **Plenary Luncheon**
Dilemmas – What They Mean to Grantmakers—*Presentation Hall, Lobby Level*

2:30 – 4:00 p.m. **Community Development Track III**—*Curtice/Chrysler/Nash Suites, Lobby Level*

More on Ethics – Conversation With
Michael Josephson—*Dort/Durant Suites, Lobby Level*

Thursday, November 9

2:30 – 4:00 p.m. **National Community Foundation**
Development Track—*Sloan/Randall Suites, Lobby Level*
Educating Michigan Nonprofit Leaders—*Miami Suite, Concourse*
Foundation Center Regional Collections

3:30 – 5:00 p.m. **Annual Meeting**—*San Antonio Suite, Concourse*
4:15 – 5:00 p.m. **Refreshment Break**—*East Foyer, Lobby Level*
5:15 – 6:00 p.m. **CMF Annual Members' Meeting**—*Presentation Hall, Lobby Level*
Advisory Cabinet Meeting—*Curtice/Chrysler/Nash Suites, Lobby Level*

6:00 – 10:00 p.m. **Reception,**
Dinner and Entertainment—*Alfred P. Sloan Museum/Flint Institute of Arts/University of Michigan-Flint Theatre*

Friday, November 10

7:00 a.m. – 12:30 p.m. **Registration**—*East Foyer, Lobby Level*
Gathering Place—*Whiting Suite, Lobby Level*
7:00 – 7:30 a.m. **Early Bird Coffee**—*Whiting Suite, Lobby Level*
7:00 – 8:15 a.m. **Community Foundation Breakfast Meeting**—*River Cafe, Hyatt Regency Lobby*

7:30 – 8:15 a.m. **Buffet Breakfast**—*Presentation Hall, Lobby Level*
8:30 – 10:00 a.m. **National Community Foundation Development Track I**
Founding Community Foundations—*Minneapolis Suite, Concourse*
Growing Community Foundations—*Palm Beach/Baltimore Suites, Concourse*

Managing Community Foundations—*Fort Worth Suite, Concourse*
Corporate Giving Session I—*Curtice/Chrysler/Nash Suites, Lobby Level*

8:30 – 10:00 a.m. **Investment Seminar I**—*Carriage A, Lobby Level*
The Necessity of the Arts to the Community—*Pioneer Suite, Concourse*

10:00 – 10:30 a.m. **Conversation With John A. Edie**—*Bishop Suite, Concourse*
10:30 a.m. – 12:00 noon **Refreshment Break**—*East Foyer, Lobby Level*

National Community Foundation
Development Track II—*Regency Ballroom, Concourse*
Corporate Giving Session II—*Curtice/Chrysler/Nash Suites, Lobby Level*

Investment Seminar II—*Carriage A, Lobby Level*
Conversation With Norman A. Brown—*Bishop Suite, Concourse*
12:15 – 2:00 p.m. **Closing Luncheon**—*Donor's Platform*—*Presentation Hall, Lobby Level*

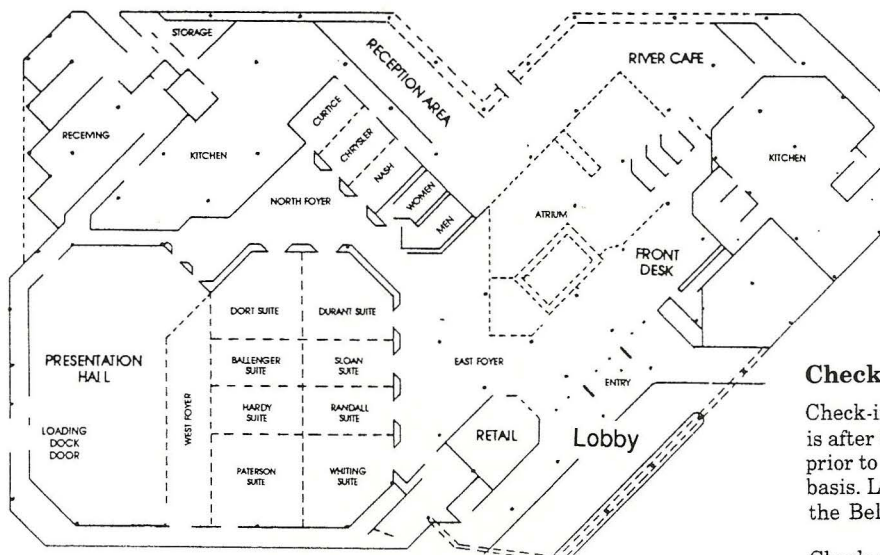


Council of Michigan Foundations

The Council of Michigan Foundations (CMF) is a nonprofit association of Michigan grantmakers, including private and community foundations, banks serving trusts, and corporations with giving programs. CMF began in 1973 on the premise that philanthropy is more effective when grantmakers have the opportunity for continuing education, communication, and information.

18th Annual CMF Conference
October 31 - November 2, 1990
Clarion Hotel & Conference Center, Lansing

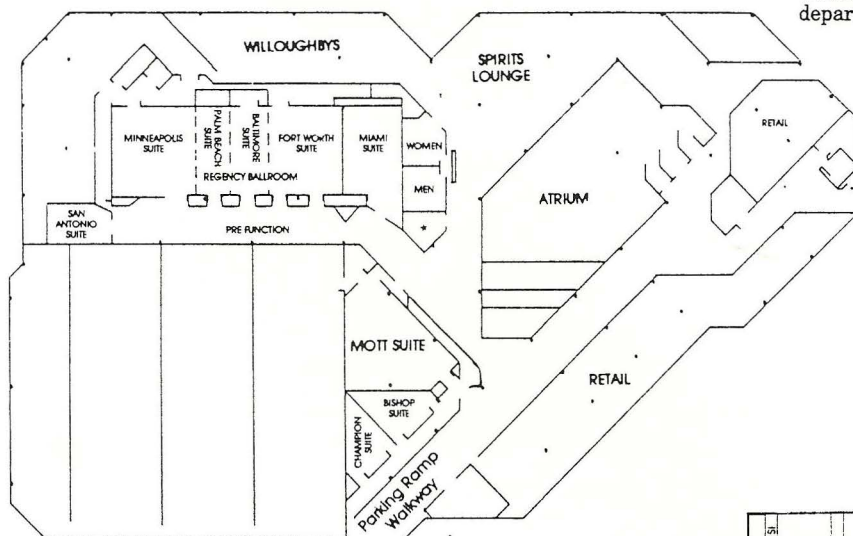
Display materials for the 17th Annual CMF Conference are courtesy of participating foundations; The Foundation Center in New York; and the University of Michigan - Flint Foundation Center Regional Collection.



Check-in/Check-out Time

Check-in time at the Hyatt Regency is after 3:00 p.m. Room assignments prior to 3:00 p.m. are on availability basis. Luggage may be stored with the Bell Captain.

Check-out time at the Hyatt Regency is 12:00 p.m. Luggage may be stored with the Bell Captain prior to departure.



Parking

Parking is available in the Hyatt Regency Hotel ramp, adjacent to the building. Special conference rate: \$2.50/day.

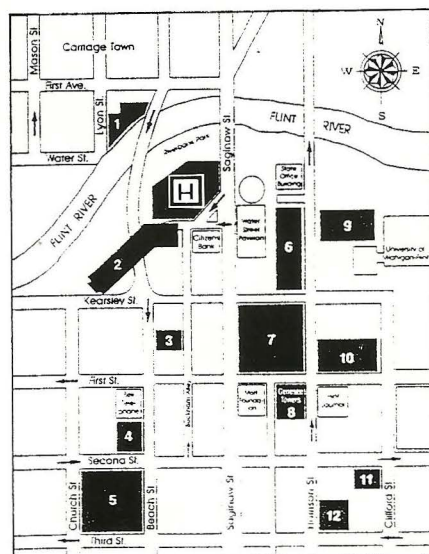
Additional parking is available in the Water Street Pavillion surface lot on the corner of N. Saginaw and E. Kearsley. Special conference rate: \$2.50/day.

In order to take advantage of the special rate, CMF conference participants must come to the *CMF Conference Registration Desk* and have their parking tickets stamped.

SMOKING POLICY

During regularly scheduled conference sessions, smoking will be permitted only at the luncheon sessions. When facing the head table, the smoking section will be on your left.

No smoking is permitted during any other sessions.



Downtown Flint Parking Map

 Hotel  Parking Ramps



Council of Michigan Foundations

P.O. Box 599

Grand Haven, MI 49417

(616) 842-7080

The Gathering Place

The Gathering Place will serve as the meeting ground for conference registrants and will include a variety of features of interest to conference registrants. In addition to member annual reports, CMF will display publications available through the office. The Foundation Center Regional Collection Libraries will have their resource materials on display.

Message Center

The Message Center is located in the Gathering Place and will be accessible during conference registration hours. Conference registrants are urged to check the message board on a regular basis.

Because registrants have few opportunities to check the message board, you are encouraged to have your messages left with the hotel through the message service operator.

**Designs/Production:
Program and Mailers**

Robert E. Hency, Director of Dissemination & Communications, W.K. Kellogg Foundation, Battle Creek

Conference Coordinator

Sandra G. Hussey, Member Services Director, Council of Michigan Foundations, Grand Haven

Photographer

Kevin A. Beswick, Photographer, Steelcase Inc., Grand Rapids

Staff

Dorothy A. Johnson, President
Sandra G. Hussey, Member Services Director
Jeri L. Fischer, Staff Associate
Judy M. Carl, Staff Associate
Kathryn A. Agard, Program Director, Community Foundations
Judith A. Steudle, Secretary

Part-Time Staff

John L. Allen, Editor, *The Michigan Scene*
Jane F. Morgan, Program Associate, State of Michigan/Community Foundation Energy Initiative
Linda Patterson, Program Associate, Improving Philanthropy Project

Acknowledgements

CMF is most grateful to the following members for their additional Conference support:

Citizens Commercial & Savings Bank
Community Foundation of Greater Flint
The Flint Journal
W.K. Kellogg Foundation
Michigan Bell Telephone Company
Michigan National Bank
Charles Stewart Mott Foundation
NBD Genesee Bank