

A large, stylized graphic of the number '90'. The '9' and '0' are white with a thick red shadow. The '9' is positioned over a black square with a white grid pattern. The '0' is positioned over a red shape that resembles a torn piece of paper or a splash. The background is a bright yellow shape that also looks like a splash or a torn piece of paper.

# **Dynamic Grantmaking to Span the 90s**

18th Annual Conference of the  
Council of Michigan Foundations

Clarion Hotel, Lansing  
October 31- November 2, 1990



## HONORARY CHAIRPERSONS



### ESTHER S. AND CARL A. GERSTACKER

Midland, and indeed all of Michigan, are fortunate to count among its citizens the Honorary Chairpersons of the 18th Annual Council of Michigan Foundations Conference. Mr. and Mrs. Gerstacker have served both the philanthropic community and the larger world community with distinction for many years.

Both Gerstackers worked with the Dow Chemical Company; Esther in the Human Relations Division, and Carl in several positions including Chairman of the Board from 1960 to 1976, and currently as Director Emeritus, an honor conferred upon his retirement from Dow in 1981. Both Gerstackers are personally involved in their greater communities through service to youth, cultural, economic, religious and educational organizations. Among their many activities, Mrs. Gerstacker has been the Board President of the Girl Scouts, United Way, and the Midland Foundation; she was one of 150 women recognized by the Outstanding Women of Michigan Sesquicentennial Awards in 1987. Mr. Gerstacker has served on the U.S. Commission of UNESCO, over twenty corporate Boards of Directors, is a 33rd degree Mason, and is a former Chairman of the U.S.-Japan Cultural Commission, being awarded the Second Class of the Order of the Rising Sun from the Emperor of Japan in 1977. Both members of this committed couple have been active in the development of Northwood Institute, and both have served on the Vestry of Saint John's Episcopal Church in Midland.

CMF salutes this caring and generous couple who are also parents to four daughters, one son and six grandchildren. May their leadership inspire all of us as we come together to consider our future leadership and philanthropic roles.

## ■ DEAR FOUNDATION AND CORPORATE GRANTMAKERS:

Welcome to Lansing. The Council of Michigan Foundations is very enthused about bringing the Annual Conference to the state capital. It is an exciting time to be in Lansing with the election just around the corner.

The theme of the 18th Annual CMF Conference is "Dynamic Grantmaking to Span the 90s." The Program Committee has skillfully put together a program that will allow us to focus on the new decade and how we, as grantmakers, can have the most impact as we enter it. Sessions will offer an opportunity to examine changing attitudes regarding education, environment, health, and several other areas of interest.

This year's Host Committee has put together tours designed to showcase some of the finest museums and cultural centers our Capital has to offer. Thursday evening we will tour and dine at the Michigan Library and Historical Center where we will be entertained by artists of the Festival of Michigan Folklife.

The 18th Annual Conference offers foundation and corporate trustees, officers and staff the opportunity to come together, share knowledge and viewpoints, and then return home with renewed vision and a stronger bond with their fellow grantmakers.

Chairing the Program Committee and Host Committee of this Conference of the Council of Michigan Foundations has been an honor and privilege. We look forward to welcoming you to Lansing.

*Sincerely,*

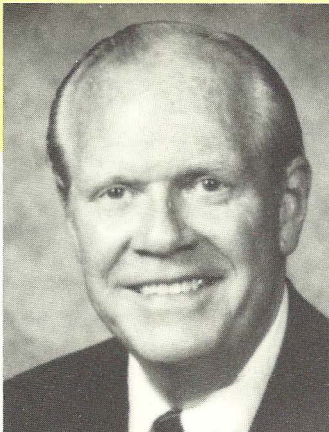
**Leo J. Brennan**



Executive Director  
Ford Motor Company Fund

**PROGRAM CHAIRMAN**

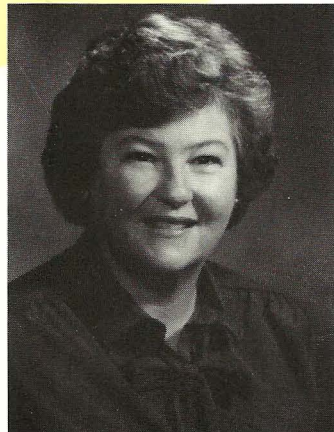
**Robert A. Fisher**



President & Trustee  
Frank S. & Mollie S.  
VanDervoort Memorial Fdn.

**HOST COMMITTEE  
CO-CHAIRMAN**

**Mary L. Olson**



Executive Director  
Capital Region  
Community Fdn.

**HOST COMMITTEE  
CO-CHAIRMAN**

# WEDNESDAY, OCTOBER 31

## GATHERING PLACE

### BOARD ROOM

Open throughout CMF Conference

The Gathering Place is the meeting ground for Conference registrants and will include a variety of special features. It is open throughout the conference. View:

- CMF Exhibits
- Annual Report Display
- Video Film Festival
- Foundation Center Regional Library Collection Display

## BOARD OF TRUSTEES MEETING 11:00 a.m. - 1:30 p.m.

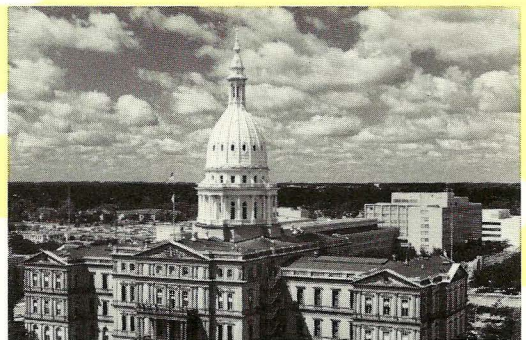
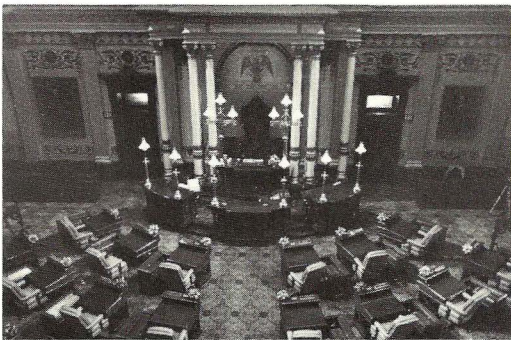
### IMPERIAL ROOM

## CONFERENCE REGISTRATION OPEN 11:00 a.m. - 7:30 p.m.

### CONFERENCE CENTER LOBBY

## LANSING AREA TOURS 2:00 - 5:00 p.m. (Advance reservation required)

Conferees will meet at the main entrance of the Clarion Hotel where they will board a shuttle bus for the tour of their choice.



**Michigan's Capitol** - For 111 years the Capitol has served as the seat of Michigan's government. Lawmakers, concerned citizens, and tours have passed through its halls, chambers and offices, which show the effects of time and use. In 1987 the Michigan Capitol Committee was established to oversee the restoration of the historic building to its original grandeur. Conferees will have an opportunity to tour the newly restored Senate and House Chambers.

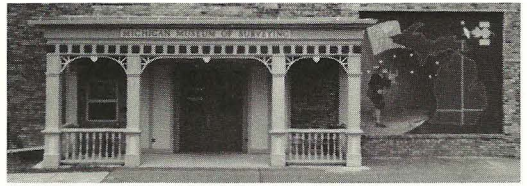
Tour Facilitators: *Gregory & Ann Gessert,*  
*Frank S. & Mollie S. VanDervoort Memorial Foundation*



**Arts/Science** A front row seat to the universe is reserved for you in the Abrams Planetarium's sky theater. Visit remote scenes of grand proportions and breathtaking beauty during a special tour of this innovative science education facility. Next stop, tour the magnificent Wharton Center, premier performing arts center in Michigan. The state-of-the-art facility not only offers a full schedule of touring Broadway shows, leading dance troupes, and world-famous soloists and ensembles, but also showcases performances by the School of Music, Department of Theatre, Greater Lansing Symphony Orchestra, and Opera Company of Mid-Michigan.

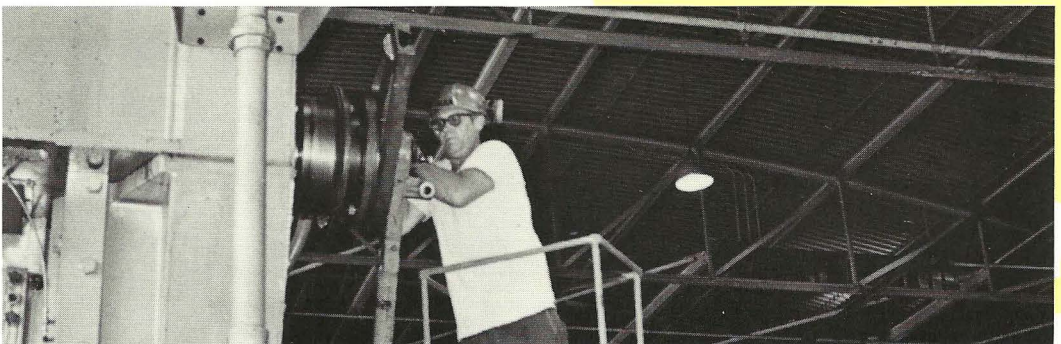
**Cowles House** - Last stop, join Nancy and John DiBiaggio, President of Michigan State University for tea at Cowles House. Cowles House is the only remaining building, constructed at the onset of Michigan Agricultural College, the nation's first land-grant agricultural college. Originally built as a "Farm Cottage" in Faculty Row, Cowles House was completed in 1857. It was the residence for the first president of the college and his successors.

Tour Facilitators: *Jack & Amy Fistler, Health Education Foundation*



**History/Science** - The R. E. Olds Transportation Museum showcases the unique role transportation has played in US history. The museum focuses on Lansing-built transportation, including automobiles, highwheel bicycles, engines, and more. Exhibits featured are: a 1931 Reo Royale, a 1926 Olds "Mystery Car," and the last V-8 engine produced by Oldsmobile. Next, on to Impression 5 Science Museum where over 150 hands-on exhibits will stimulate and challenge you. Learn how a robot operates, generate electricity with your bare hands, freeze your shadow on the wall and even bend light to create unusual paints. Your imagination and creativity will guide you. Last stop, the Michigan Surveyors Museum - only museum devoted to land surveying in the nation. The museum exhibits feature artifacts and beautiful antique classic instruments that were used to plat Michigan. One stop provides access to all three museums.

Tour Facilitators: *Gregory & Helen Deliyanne, Frank S. & Mollie S. VanDervoort Memorial Foundation*



**Manufacturing** - Tour Trumark, Inc. a (minority owned business) manufacturer of quality metal-stamping which is known statewide for being the initiator and supporter of targeted programs which favorably impact the minority community. Trumark founded the Single Parent Family Institute which provides training in work ethic and job skills to single women with children. They will demonstrate how a single parent family (SPF) graduate will generate more economic benefits to their employees and higher quality performance and productivity.

Tour Facilitators: *Jonathan White, The John & Elizabeth Whitely Foundation; Jane White, Capital Region Community Foundation*

**CONFERENCE AND NEW MEMBER ORIENTATION** 5:00 - 5:30 p.m.

**EXECUTIVE TRAINING ROOM**

New members and first-time conference registrants are invited to learn more about YOUR organization. Old friends are welcome as well; exchange ideas with CMF officers, trustees, and staff.

Speakers: *Judith S. Hooker, Chair, Council of Michigan Foundations; and Trustee, Robert L. & Judith S. Hooker Foundation, Grand Rapids*  
*Dorothy A. Johnson, President, Council of Michigan Foundations*

---

**ADVISORY CABINET MEETING** 5:30 - 6:00 p.m.

**DIRECTORS ROOM, LOWER LEVEL**

Meeting of past Council of Michigan Foundation Trustees.

Chairman: *Russell G. Mawby, Chairman & CEO, W.K. Kellogg Foundation, Battle Creek*

---

**OPENING RECEPTION** 6:00 - 6:45 p.m.

**ATRIUM**

. . . Join us for a cup of witches brew as we celebrate Halloween with costumed entertainers, who will rattle the rafters and clear the cobwebs from within our midst, while we greet old and new acquaintances. . .

Reception hosted by Michigan National Bank & Fidelity Investments.

*Music provided by the Jon Dale Trio*  
*John Dale Smith, Director, Performing Arts*  
*Department, Lansing Community College*

**EDUCATION IN MICHIGAN** 7:00 - 7:50 p.m.

**GRAND BALLROOM, SECTION E**

- Welcome: *Judith S. Hooker, Chair, Council of Michigan Foundations; and Trustee, Robert L. & Judith S. Hooker Foundation, Grand Rapids*
- Remarks: *Leo J. Brennan, Jr., Executive Director, Ford Motor Company Fund; and CMF 18th Annual Conference Program Chairman, Dearborn*
- Introduction: *Robert E. Hency, Director of Special Projects, W. K. Kellogg Foundation*
- Moderator: *Tim Skubick, Capital Correspondent, WKAR-TV, Lansing*
- Speakers: *John DiBiaggio, President, Michigan State University, E. Lansing*  
*John W. Porter, General Superintendent of Schools, Detroit Public Schools Center; and Trustee, Charles Stewart Mott Foundation, Detroit*  
*Frank P. Popoff, President & CEO, Dow Chemical Company, Midland*

Problems, challenges, and solutions are the agenda-headings for the education scene in Michigan. Superb programs and enormous failings make up the two edges of this cutting issue. For the state's students, educators, businesses, and communities there is a looming question: Is education in Michigan on the ropes or winning the fight? This opening session will be a give-and-take examination of this sensitive issue in Michigan. PBS commentator Tim Skubick will moderate the discussion between the education and corporate experts who comprise the panel.

**DINNER** 8:00 - 9:30 p.m.

**GRAND BALLROOM, SECTION F-J**

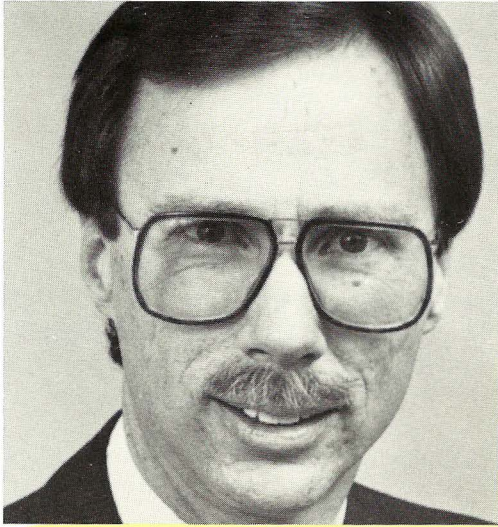
- Moderator: *Judith S. Hooker, Chair, Council of Michigan Foundations; and Trustee, Robert L. & Judith S. Hooker Foundation, Grand Rapids*
- Invocation: *Robert A. Fisher, President & Trustee, Frank S. & Mollie S. VanDervoort Memorial Foundation; and CMF 18th Annual Conference Host Committee Co-Chair, Lansing*
- Presentation: *Dorothy A. Johnson, President, Council of Michigan Foundations*
- Response: *Carl A. & Esther S. Gerstacker, Honorary Chairpersons, Council of Michigan Foundations, Midland*

*"Pungent Puns and Punchlines for Philanthropists"*

*.....5 minutes of fun.....*

*William S. Banfield, President, Michigan Colleges Foundation, Southfield*

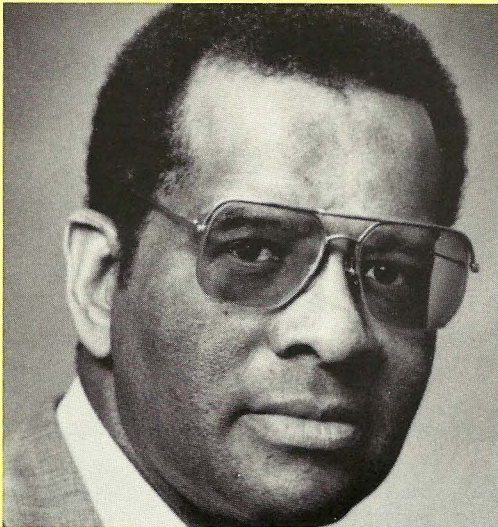




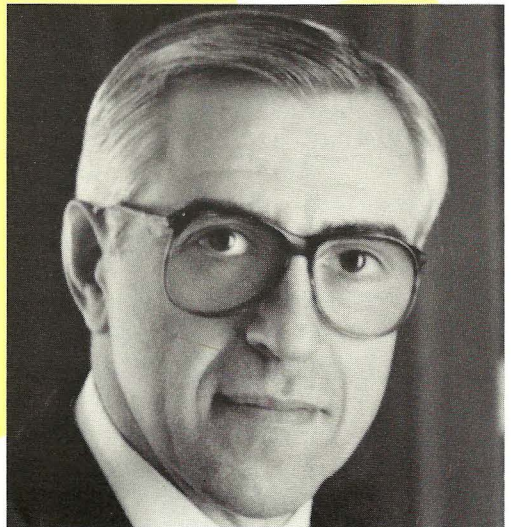
**Tim Skubick**



**John DiBiaggio**



**John W. Porter**



**Frank Popoff**

---

**AFTERGLOW** 9:30 p.m.

**ATRIUM**

End the evening with a cup of hot cider, coffee or Halloween cordial.  
Treats will also be served. . .

Hosted by the Talbert and Leota Abrams Foundation.

*Music provided by John Dale Smith, Pianist*

## ■ GATHERING PLACE

### BOARD ROOM

Open throughout CMF Conference

The Gathering Place is the meeting ground for Conference registrants and will include a variety of special features. It is open throughout the conference. View:

- CMF Exhibits
  - Annual Report Display
  - Video Film Festival
  - Foundation Center Regional Library Collection Display
- 

## ■ CONFERENCE REGISTRATION 7:00 a.m. - 6:00 p.m.

### CONFERENCE CENTER LOBBY

---

## ■ EARLY BIRD COFFEE 7:00 - 7:30 a.m.

### BOARD ROOM

Those wishing to enjoy an early morning cup of coffee before the buffet breakfast are welcome to stop by the "Gathering Place."

---

## ■ BUFFET BREAKFAST 7:15 - 7:45 a.m.

### GRAND BALLROOM, SECTION F-J

---

## ■ CMF ANNUAL MEMBERS' MEETING

### GRAND BALLROOM, SECTION F-J

Speakers:

*Judith S. Hooker, Chair, Council of Michigan Foundations*

*Dorothy A. Johnson, President*

*Richard K. Rappleye, Treasurer*

*Mariam C. Noland, Vice Chairman - Community Foundations*

*Donald A. Lindow, Vice Chairman - Corporate Grantmakers*

*Russell G. Mawby, Chairman, Improving Philanthropy Committee*

## CONCURRENT SESSIONS 8:30 - 10:00 a.m.

---

### ■ COMMUNITY INFORMATION TRACK I

The 1990 Census: Its Ramifications for Michigan Grantmakers

#### EXECUTIVE TRAINING ROOM

The 1990 Census offers new demographic information/data to Michigan grantmakers. The Census will also initiate significant public policy and economic changes including reduced congressional representation and federal funding. This session will review the expected political and economic ramifications, as well as local and regional sources for the vital community data.

Moderator: *John E. Marshall III, President, The Kresge Foundation, Troy*

Speakers: *Claude Brittingham, Director, Research Division, United Community Services of Metropolitan Detroit, Detroit*

*Dwight Dean, Midwest Regional Director, U.S. Bureau of the Census, Detroit*

---

### ■ HEALTH CARE TRACK I

Substance Abuse: Public and Philanthropic Initiatives

#### UNIVERSITY MEETING ROOM #2

This session will review both Michigan's policy and strategy to combat drugs and substance abuse, and Project Prevention, the Community Foundation for Southeastern Michigan's initiative to reduce drug abuse through community-based prevention efforts. The panelists will also discuss specific models of effective community-level programs.

Moderator: *Ernest B. Gutierrez, Jr., Program Officer, The Kresge Foundation, Troy*

Speakers: *C. David Campbell, Program Officer, Community Foundation for Southeastern Michigan, Detroit*

*Toby Citrin, Director, Resource for Public Health Policy, University of Michigan School for Public Health, and former Director, City of Detroit Public Health Department, Ann Arbor*

*Donald L. Reisig, Director, Governor's Office of Drug Agencies, Lansing*

## ■ YOUTH TRACK I

Small Children Are A Big Concern

### UNIVERSITY MEETING ROOMS #3 & #4

Two issues affecting small children are the focus of this workshop. First, is the life-and-death concern about child mortality: How can foundations help prevent the predicted 3,000 deaths of Michigan children in the coming year? Second, child care has come out of the closet; it is no longer just a “woman’s issue” but is the concern of fathers, employers, policymakers and funders. Attendees will leave the session with many ideas about effective program models.

Moderator: *W. Calvin Patterson III, Executive Director, McGregor Fund, Detroit*

Speakers: *Denise Holmes, Chief Planning and Analysis, Office of Maternal and Child Health, Michigan Department of Public Health, Lansing*

*James J. Lardie, President and CEO, The National Association of Child Advocates, Cleveland*

*Carol Quarterman, Executive Director, Child Care Coordinating Council of Detroit/Wayne County, Detroit*

---

## ■ ENVIRONMENT TRACK I

Protecting Groundwater Quality In Your Community

### GRAND BALLROOM, SECTION B & C

This session will discuss how foundations of all sizes and types can be involved, from the state level to youth oriented local initiatives, in the growing effort to protect groundwater quality in Michigan.

Moderator: *Jessica Kovan, Assistant Program Director, W.K. Kellogg Foundation, E. Lansing*

Speakers: *Gail Gruenwald, Executive Director, Tip of the Mitt Watershed Council, Conway*

*Richard Passero, Director, Center for Water Research, Dept. of Geology, Western Michigan University, Kalamazoo*

*Christine Stephens, Acting Assistant Director - Agriculture and Marketing Programs, Cooperative Extension Services, Michigan State University, E. Lansing*

## COMMUNITY FOUNDATION BASICS

### UNIVERSITY MEETING ROOM #1

The focus will be an overview of community foundations and will highlight issues that need to be discussed; it is designed for new staff and new trustees. This is an opportunity to become oriented to community foundation history, and the technical aspects of grantmaking, asset development, investments and fund management, and marketing/public relations.

Moderator: *Kathryn A. Agard, Program Director, Community Foundations, Council of Michigan Foundations*

Speakers: **History and Background** - *David D. Gardiner, Assistant Director, Kalamazoo Foundation*

**Asset Development** - *Lisa Wyatt Knowlton, Vice President, Battle Creek Community Foundation*

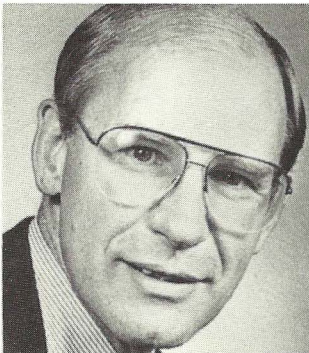
**Accounting and Public Support** - *Gregory M. Zerlaut, Finance Administrator, Muskegon County Community Foundation*

**Fund Definition and Management** - *Karen L. Leppanen, Financial Services Officer, Community Foundation for Southeastern Michigan, Detroit*

**Grantmaking** - *Marcia L. Rapp, Program Officer, The Grand Rapids Foundation*

**Public Relations and Marketing** - *Elizabeth A. Cherin, Associate Director, The Fremont Area Foundation*

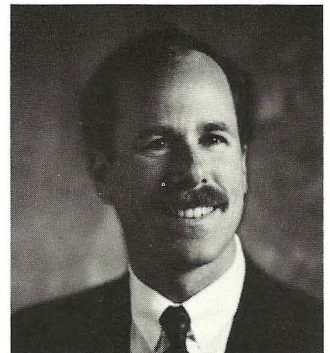
**CMF Support Programs** - *Kathryn A. Agard, Program Director, Community Foundations, Council of Michigan Foundations*



**Arthur W. Angood**



**C. Patrick Babcock**



**Thomas C. Bailey**

## ■ GRANTMAKING BASICS

### IMPERIAL ROOM

A workshop that will focus on the “nuts and bolts” of grantmaking, setting priorities, assessing proposals, and evaluating results.

Moderator: *William A. Diaz, Program Officer, The Ford Foundation, New York*

Speaker: *Robert S. Collier, Executive Director, Rotary Charities of Traverse City*

---

## ■ REFRESHMENT BREAK 10:00 - 10:30 a.m.

### CONFERENCE CENTER LOBBY

---

## CONCURRENT SESSIONS 10:30 A.M. - 12:00 NOON

---

## ■ COMMUNITY INFORMATION TRACK II

ABC Survey - “Don’t Ask People What They Think If You Don’t Really Want To Know”  
**EXECUTIVE TRAINING ROOM**

It’s never been done before: A survey of opinions for every sector of a city. Learn how one Michigan community has undergone a comprehensive attitudinal survey to determine what its leaders, residents, youth, and commuters believe are the city’s strengths and weaknesses. This program will detail the development, cost, implementation, and outcomes of the “ABC Survey.”

Moderator: *Willard J. Hertz, Vice President, Charles Stewart Mott Foundation, Flint*

Speakers: *Arthur W. Angood, Executive Vice President,  
The Miller Foundation, Battle Creek*

*Greg Markus, Professor, Institute for Social Research,  
University of Michigan, Ann Arbor*

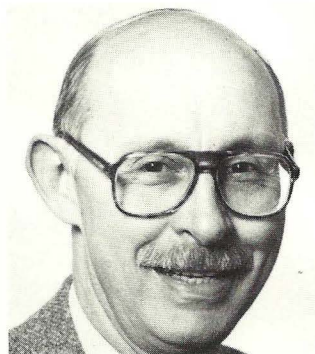
*Shirley McFee, Mayor of Battle Creek, Battle Creek*

*Kimberly Skeltis, Student, Kellogg Community College, Battle Creek*

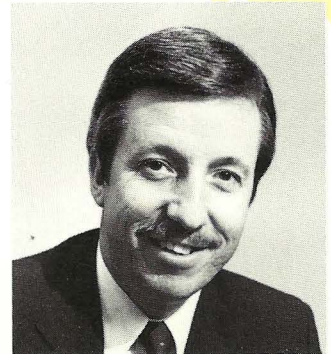
---



**Rosemary H. Bruner**



**Benjamin Burns**



**Dwight P. Dean**

## HEALTH TRACK II

Access to Health Care: A Model of Basic Services Every Citizen Deserves  
**UNIVERSITY MEETING ROOM #2**

Equitable Access to Health Care has been discussed in Michigan for the last two years. One million Michigan residents remain without planned coverage. This session will outline the basic health services that should be available to every citizen and a process for making the moral, economic, and political decisions that are necessary to implement the model.

Moderator: *Ira Strumwasser, Executive Director, Michigan Health Care Education and Research Foundation, Detroit*

Speakers: *Sylvester Berki, Professor, Department of Health Services Management and Policy, School of Public Health, University of Michigan, Ann Arbor*  
*Leonard M. Fleck, Associate Professor of Medical Humanities, Medical Ethic and Health Policy, Michigan State University, E. Lansing*

---

## YOUTH TRACK II

Rethinking Rehabilitation  
**UNIVERSITY MEETING ROOMS #3 & #4**

The fact that juvenile crime continues to rise tells us that we need new methods of treating youthful offenders. This workshop presents a national perspective on "what works," including the recommendations of a statewide taskforce, and a gutsy new program model that combines adventure education, short-term residential care, and in-home family support.

Moderator: *Leonard W. Smith, President, The Skillman Foundation, Detroit*

Speakers: *J. Otis Davis, Director, Bureau of Juvenile Justice, Office of Children and Youth Services, Lansing*  
*Hunter Hurst, Director, National Center on Juvenile Justice, Pittsburgh*  
*Carl Latona, Director, Highfields, Onondaga*

---



**John A. Edie**



**Lynn Feldhouse**



**Sunny Fischer**

## ENVIRONMENT TRACK II

### Michigan's Diminishing Natural Lands: A Role for Philanthropy? GRAND BALLROOM, SECTION B-C

This session will provide practical approaches that philanthropy can use in preserving our natural lands. Current land use practices and their impact on fragile areas such as wetlands, dunes, and green spaces will be addressed. Innovative ideas for reforestation and restoration will be included.

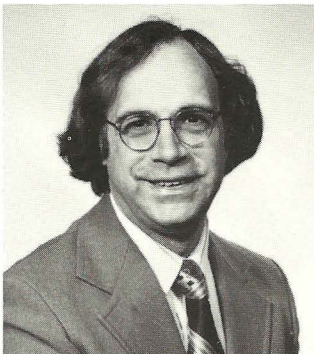
- Moderator: *Marcia L. Rapp, Program Officer, The Grand Rapids Foundation*
- Speakers: *Thomas C. Bailey, Executive Director, Little Traverse Conservancy, Harbor Springs*  
*Deborah R. Meadows, Director of Programming & Administration, Center for Environmental Study, Grand Rapids*  
*Peter M. Wege, President, The Wege Foundation, Grand Rapids*
- 

## COMMUNITY FOUNDATIONS

### Relating to Donor Families GRAND BALLROOM, SECTION E

Community foundations hold donor gifts in trust. What happens when the donor's family objects to the gift? In their 70-year histories, the Kalamazoo Foundation and the Grand Rapids Foundation have faced this issue very publicly. Learn from their experiences what to do to work with families who have made gifts to the foundation.

- Moderator: *Lucas Pfeiffenberger, Past President, Northeast Michigan Community Foundation, Alpena*
- Speakers: *Chris T. Christ, Trustee, Battle Creek Community Foundation; Trustee, W.K. Kellogg Foundation; and, President, Vandervoort, Cooke, McFee, Battle Creek*  
*Daniel L. DeMent, Attorney, Miller, Canfield, Paddock and Stone, Kalamazoo*
- 



**Leonard M. Fleck**



**Shirley Fredricks**



**Rosemary Ging**



*Judy Samelson, Director of Communications,  
Charles Stewart Mott Foundation, Flint*

*Diana Sieger, Executive Director, Grand Rapids Foundation*

## **FAMILY FOUNDATIONS**

### **IMPERIAL ROOM**

How are they managed? How are successor trustees selected? How do you balance foundation responsibilities with family ties? To staff or not to staff? Come and exchange ideas on these and related topics with your peers.

Moderator: *Elizabeth H. Binda, Vice President, Guido A. & Elizabeth Binda Foundation, Battle Creek*

Speakers: *Melissa Sage Booth, President and Trustee, Sage Foundation, Detroit*

*Shirley J. Fredricks, Executive Director/Trustee, The Lawrence Welk Foundation, Santa Monica, CA*

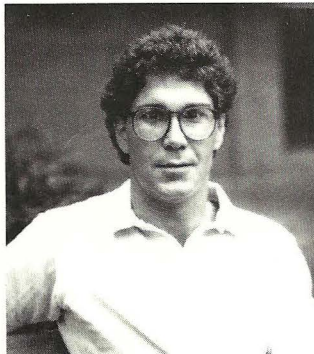
*Wm. John Upjohn, President, The Acme Foundation, Kalamazoo*



## **Dynamic Grantmaking to Span the 90s**



**Gail Gruenwald**



**Gregory P. Markus**



**Deb Meadows**

**DONORS PLATFORM/  
PLENARY LUNCHEON**

12:30 - 2:00 p.m.

**GRAND BALLROOM**

**KEYNOTE  
SPEAKER**

**Edsel B. Ford II**

**EXECUTIVE DIRECTOR  
FORD MOTOR COMPANY'S  
MARKETING STAFF**

Mr. Ford joined the Ford Motor Company in 1974 as a product analyst, later working in the Detroit and Los Angeles sales offices. He subsequently served as assistant managing director of Ford of Australia; in 1981 and 1983 he became the U.S. Ford Division's marketing plans manager and the advertising manager, respectively. He was named general marketing manager for Lincoln-Mercury in 1985, the division's general manager in 1987, and assumed his current position in 1989. He was elected to the company's Board of Directors in 1988.

Born in Detroit, Mr. Ford graduated from the Gunnery School in Connecticut and holds a B. A. Degree from Babson College in Massachusetts in 1973. He received an honorary doctor of business administration degree from Lawrence Technological University in Detroit in 1989.

Mr. Ford is the great-grandson of the company's founder, Henry Ford. His grandfather, Edsel B. Ford, and his father, Henry Ford II, served as president of the company in 1919 to 1943 and 1960 to 1980, respectively.

Moderator: *Alfred H. Taylor, Jr., Chairman, The Kresge Foundation, Troy*

Introduction: *Leo J. Brennan, Jr., Executive Director, Ford Motor Company Fund; and CMF 18th Annual Conference Chairman, Dearborn*



## CONCURRENT SESSIONS 2:30 - 4:00 P.M.

---

### ■ COMMUNITY INFORMATION TRACK III

Women, Girls & Giving

#### EXECUTIVE TRAINING ROOM

The socioeconomic status of women and girls in Michigan, and the philanthropic response to their special needs and opportunities is the focus of this session. Speakers will address the emerging trend of foundations created by women donors, as well as the growth in special funds designated solely for women and girls' programs. A new report, *The Difference It Makes*, commissioned by the Michigan Women's Foundation, will be introduced.

Moderator: *Lisa Wyatt Knowlton, Vice President, Battle Creek Community Foundation*

Speakers: *Sunny Fisher, Executive Director, The Sophia Fund, Chicago*

*Margaret A. Riecker, President, Harry A. & Margaret D. Towlsey Foundation, Ann Arbor*

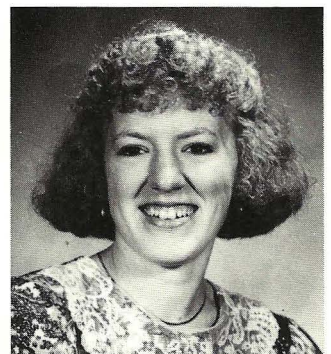
*Jacquelin Washington, President, Pontiac Area Urban League, Pontiac*



**Shirley M. McFee**



**Ralph Nichols**



**Kimberly Skeltis**

## ■ YOUTH TRACK III

### America's Shame, America's Hope: Twelve Million Youth At Risk UNIVERSITY MEETING ROOMS #3 & #4

In January, 1991, Bill Moyers will host a PBS television special featuring a report funded by the Charles Stewart Mott Foundation, *America's Shame, America's Hope*. It is about the crisis of youth emerging from our schools unprepared for college or the kind of work there is to do. How can the foundation community help provide the proper tools and opportunities to give these youth a chance? Presenters include an author of the national report, a superintendent of a school district, and a young person who has first-hand experience in today's urban schools.

Moderator: *Jon Blyth, Program Officer, Charles Stewart Mott Foundation, Flint*

Speakers: *George B. Autry, President, M.D.C. Incorporated, Chapel Hill, NC*

*Rey Hernandez, Vice Chairperson, National Youth Build Coalition,  
Boston, MA*

*Frank Rapley, Superintendent, Kalamazoo School District*

## ■ CONVERSATION WITH WILLIAM S. WHITE

### UNIVERSITY MEETING ROOM #2

An opportunity to talk with William S. White, Chairman and CEO, about the Charles Stewart Mott Foundation. . . its creation and grant interests which include education, communities and neighborhoods, environment, etc.

Moderator: *Stephen E. Upton, Chairman/Board of Directors, Frederick S. Upton  
Foundation, St. Joseph*

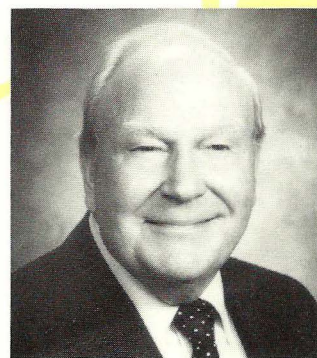
Speaker: *William S. White, Chairman and CEO, Charles Stewart Mott  
Foundation, Flint*



**Christine Stephans**



**Jacquelin Washington**



**Peter Wege**

## ■ AIDS AND HIV: A CONVERSATION ABOUT THE FUTURE

### IMPERIAL ROOM

It has been almost a decade since the first confirmed diagnosis of AIDS. Since that time, more young Americans have died from AIDS than did in Vietnam. Also since then, the Human Immunodeficiency Virus (HIV) has been found to lead to both AIDS Related Complex and full-blown AIDS. Medical research has moved swiftly to identify possible therapies, but what about a cure or a vaccine? What is the near-term prognosis for those who are at risk? What is the longer-term outlook? Two of this nation's leading AIDS experts will candidly discuss these issues.

Moderator: *Barbara J. Getz, Program Officer, The Kresge Foundation, Troy*

Speakers: *Mathilde Krim, Founding Co-Chair, American Foundation for AIDS Research; and Research Associate, Columbia College of Physicians and Surgeons, St. Luke's - Roosevelt Hospital Center, New York*

*June E. Osborn, Chair, National Commission on Acquired Immunodeficiency Syndrome; and Dean, School of Public Health, University of Michigan, Ann Arbor*

---

## ■ SCHOLARSHIP ROUNDTABLE

### UNIVERSITY MEETING ROOM #1

Learn from the experts. . . financial aid officers of Michigan colleges and universities will discuss their policies and procedures for handling scholarship funds.

Moderator: *R. Sue Smith, Program Director, Corporate Giving Initiative, Council of Michigan Foundations, Detroit*

Speakers: *Robert Marble, Director of Financial Aid, Alma College*

*Linda Sigh, Assistant Director Scholarships/Grants, Michigan State University, E. Lansing*

*Donna Ward, Director of Financial Aid, Kellogg Community College, Battle Creek*

## ■ **COMMUNITY FOUNDATIONS**

Giftng Techniques to Community Foundations for Closely Held Businesses and Their Owners

### **GRAND BALLROOM, SECTION E**

This session, designed for community foundation staff, trustees and the attorneys, bank trust officers and accountants that work with them, will address the area of gifts to the foundation from the owners of closely held businesses.

The Executive Director of The Dayton Foundation, Mr. Bartenstein, will discuss Dayton's experience with receiving shares of closely held corporations into the Foundation. A focus will be on the opportunity for the philanthropically inclined owner of a family business to make gifts that would not otherwise be possible and in a manner that cannot be accomplished through a private foundation.

As a Tax Partner for Arthur Andersen in Dayton, Mr. Banwart, has worked in the family business area for 18 years including closely held business, estate planning, and business succession planning. He will address the tax issues involved in contributing stock of a closely held corporation to community foundations.

Moderator: *Ann L. Irish, Program Director, Muskegon County Community Foundation*

Speakers: *Leslie S. Banwart, Tax Partner, Arthur Andersen & Co., Dayton, OH*  
*Fred Bartenstein, Director, Dayton Community Foundation, Dayton, OH*

---

## ■ **FOUNDATION CENTER REGIONAL COLLECTIONS ANNUAL MEETING**

### **GRAND BALLROOM, SECTION D**

Representatives of Foundation Center Regional Collection Libraries will meet to discuss mutual concerns and interests.

---

■ **REFRESHMENT BREAK** 4:00 - 4:15 p.m.

**CONFERENCE CENTER LOBBY**

---

## ■ ISSUES FACING THE 90s

4:15 - 5:00 p.m.

**GRAND BALLROOM,  
SECTION G-J**

## **CORETTA SCOTT KING**

**President,  
Chief Executive Officer  
THE MARTIN LUTHER KING,  
JR. CENTER FOR NONVIOLENT  
SOCIAL CHANGE**

Coretta Scott King has carried her husband's advocacy of peace and justice through non-violent means across the nation and throughout the world. Since Dr. King's death, her life's work has been dedicated to building the Atlanta-based Martin Luther King, Jr. Center for Nonviolent Social Change. The Center is a living memorial to Dr. King, preserving the legacy of what the human rights movement accomplished under his leadership.

In 1983, Mrs. King helped mobilize the 20th Anniversary March on Washington, D.C., which drew more than 500,000 participants and remains the largest peaceful demonstration in the capital's history.

Mrs. King was elected Chairperson of the Martin Luther King, Jr. Federal Holiday Commission in 1984, which was formed by an act of Congress to establish the first legal holiday in honor of Dr. King.

In recent years, she has led goodwill missions to a number of Latin American and African nations, and in Bonn, Germany, and New York City, addressed two of the largest peace rallies ever held.

Mrs. King received a bachelor's of arts in music and education at Antioch College, and studied as a concert singer at the New England Conservatory of Music.

Moderator: *Russell G. Mawby, Chairman & CEO, W.K. Kellogg Foundation, Battle Creek*

Speaker: *Coretta Scott King, Founding President, Martin Luther King Center, Atlanta, GA*



## ■ CAPSULE VIEW

### “Michigan’s Legacy”

- 5:00 - 5:45 p.m. **RECEPTION - ATRIUM, CLARION HOTEL**  
6:15 - 7:30 p.m. **TOUR OF MICHIGAN LIBRARY & HISTORICAL CENTER**  
7:45 - 9:30 p.m. **DINNER - MICHIGAN LIBRARY & HISTORICAL CENTER**  
9:30 - 11:00 p.m. **AFTERGLOW - ATRIUM, CLARION HOTEL**
- 

## ■ RECEPTION 5:00 - 5:45 p.m.

### ATRIUM

Immediately following Mrs. King’s address, conferees will be invited to enjoy Michigan’s wines and cheeses before boarding a bus for the evening activities.

Reception hosted by Dykema Gossett

*Music provided by Minister Roland Sunkins III, Violinist*

**(Shuttle service to the Michigan Library & Historical Center will be continuous from 5:45 - 6:30 p.m.)**

---

## ■ MICHIGAN’S LEGACY 6:15 - 9:30 p.m.

### TOUR, DINNER AND ENTERTAINMENT

Michigan Library & Historical Center

The recently opened Michigan Library & Historical Center is an outstanding resource for the people of our state and a milestone in the revitalization of Michigan’s capital city. Our tour will begin with a visit to the State of Michigan Library, where a variety of artists from the Festival of Michigan Folklife will perform and exhibit their work.

The MSU Museum’s Festival of Michigan Folklife is produced as the centerpiece of East Lansing’s annual Michigan Festival. The Festival presents in an educational yet entertaining format musicians, dancers, cooks, artists and storytellers who represent our state’s diverse occupational, regional, tribal and linguistic groups.

Our visit will continue with a tour of the Michigan Historical Center and its three-dimensional, life size recreations of Michigan’s history from the Ice Age to the turn of the twentieth century. “Beneath The Inland Seas,” an especially impressive current exhibition, will guide you through the fascinating underwater world of Great Lakes archaeology. The arched atrium of the architecturally stunning Center also features a towering full-color relief map of Michigan.

While the Historical Center’s third floor exhibition space will soon complete construction to house additional representations of our state’s past, conferees will enjoy its ambience as a unique “hardhat” dining room featuring a distinctive Michigan entertainment surprise!

Following dinner, you are welcome to continue touring the Museum.

**(Shuttle service from Michigan Library & Historical Center to the Clarion Hotel will be continuous from 9:30 - 10:00 p.m.)**

---

## ■ AFTERGLOW 9:30 - 11:00 p.m.

### CLARION HOTEL, ATRIUM

Join us for an after dinner cordial, coffee and lite sweets.

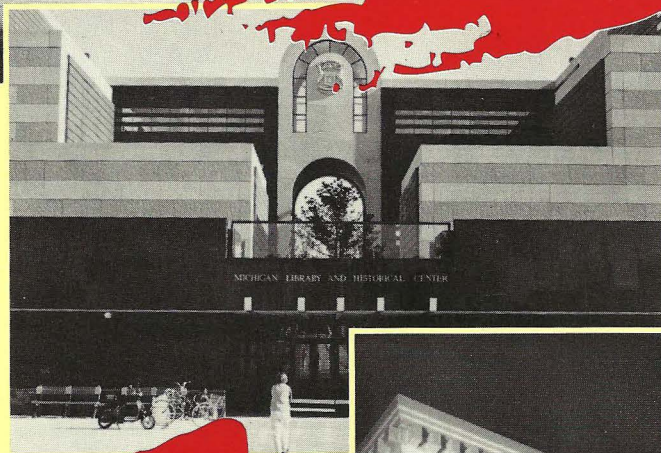
Hosted by First of America Bank-Central; Consumers Power Company

*Music provided by Jeff English, pianist*

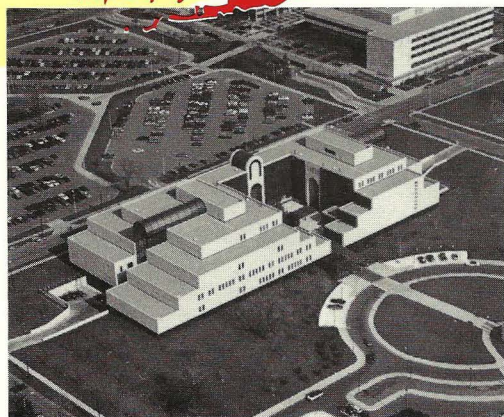




# MICHIGAN'S LEGACY



Michigan Library and  
Historical Center



## **CONCURRENT SESSIONS** 8:30 - 10:00 a.m.

---

### **COMMUNITY FOUNDATION I**

Asset Building Techniques for Community Foundations

#### **GRAND BALLROOM, SECTION E**

Two panelists will discuss asset building techniques that will be of interest to experienced community foundations, Donor Directed Funds, and Supporting Organizations. A third panelist will address emerging community foundations interested in asset fund development.

Moderator: *John E. Hopkins, Executive Director, Kalamazoo Foundation*

Speakers: *Fred Bartenstein, Director, Dayton Community Foundation*

*Patricia B. Johnson, Executive Director, Muskegon County Community Foundation*

*Duane L. Tarnacki, Partner, Clark, Klein & Beaumont, Detroit*

---

### **CORPORATE GIVING SESSION I**

Spending Less and Getting More Through Focused Giving

#### **UNIVERSITY MEETING ROOMS #3 & #4**

Explore how corporate contributions support overall community relations. Learn to turn a negative response into one with a positive impact. This session will also teach you the effective use of language.

Moderator: *Donald A. Lindow, Chairman, Corporate Giving Initiative, Council of Michigan Foundations; and First Vice President, NBD, N.A., Detroit*

Speakers: *Lynn A. Feldhouse, Manager, Chrysler Corporation Fund, Highland Park*

*Rosemary Ging, Community Relations Manager, Little Caesar Enterprises, Inc., Detroit*

*Ralph Nichols, President, Ralph Nichols Corporation, Southfield*

## ■ INVESTMENT SEMINAR

### EXECUTIVE TRAINING ROOM

An overview of the economic outlook for 1991-92 will be given, with emphasis on bond and stock market trends. The thrust of change — in Europe, Far East, with interest rates, the Dow Jones, and the S&P. Dealing with the results ...

Moderators: *Barbara Baker, First Vice President, Michigan National Bank, Farmington Hills*

*John Snyder, Vice President, Personal Trust, Comerica Incorporated, Detroit*

Speakers: *Mary Farrell, First Vice President, Paine Webber, Inc., New York*

*Alex G. Fedoroff, Vice President, Fidelity Investments, Boston*

---

## ■ COMMUNITY & CORRECTIONS — CAN THEY WORK TOGETHER?

### UNIVERSITY MEETING ROOM #2

This session will review the new Michigan Community Corrections Act and discuss roles that funders can play in helping local communities deal with offenders.

Moderators: *Gilbert Hudson, President, Hudson Webber Foundation, Detroit*

*Robert L. Queller, Vice President/Executive Director, Citizens Research Council of Michigan, Detroit*

Speakers: *Beth Arnovits, Executive Director, Michigan Council on Crime and Delinquency, Lansing*

*Gary Knapp, Chairman, State of Michigan Community Corrections Board, Traverse City*

*Cecilia Wright, Executive Director, OAR of Oakland County; and President, Association for Community Corrections in Michigan, Pontiac*



## ■ WASHINGTON UPDATE

### UNIVERSITY MEETING ROOM #1

An opportunity to learn from and talk with legal and regulatory experts about technical issues affecting YOUR foundation's grantmaking.

Moderator: *Laura A. Davis, Vice President-Corporate Affairs and Corporate Secretary, W. K. Kellogg Foundation, Battle Creek*

Speakers: *John A. Edie, Vice President & General Counsel, Council on Foundations, Washington, DC*

*Howard M. Schoenfeld, Special Assistant for Exempt Organization Matters, Washington, DC*

---

## ■ REFRESHMENT BREAK 10:00 - 10:30 a.m.

### CONFERENCE CENTER LOBBY

---

## CONCURRENT SESSIONS 10:30 a.m. - 12:00 noon

---

## ■ COMMUNITY FOUNDATIONS II

Community Foundation Affiliation Agreements —

A Report on Models from Around the Nation

### GRAND BALLROOM, SECTION E

The Community Foundation for Southeastern Michigan, with support from the Charles Stewart Mott Foundation, has researched agreements between community foundations across the country. The workshop reports the models and issues involved in developing a formal relationship with and between neighboring or potentially competitive community foundations. As community foundations continue to gain popularity, these models, and an understanding of the issues, will help you develop productive and mutually beneficial relationships.

Moderator/Speaker: *Mariam C. Noland, Executive Director, Community Foundation for Southeastern Michigan, Detroit*

Speaker: *Jennifer Leonard, Writer and Consultant, and former Vice President, Los Angeles Community Foundation, Ocean City, NJ*

## ■ CORPORATE GIVING SESSION II

Gaining Contributions Leverage Through Employees

### UNIVERSITY MEETING ROOMS #3 & #4

Employees can add tremendous value to any corporate giving program. This session will highlight case studies and examples of how companies can stretch their giving dollars through employee volunteer programs, matching programs, and working with employees to provide added value to corporate contributions decisions. A portion of the session will bring you up-to-date on trends and issues in matching programs by the Council for Advancement and Support of Education (CASE), the national clearinghouse of corporate matching gift information.

Moderator: *Vickie G. Heerlyn, Manager, Corporate Support Programs, The Upjohn Company; and Executive Director, The Upjohn Company Foundation, Kalamazoo*

Speakers: *Rosemary H. Bruner, Assistant Vice President and Director, Community Affairs, Hoffmann-LaRoche, Inc., Nutley, NJ*

*Cheryl L. Martin, Director, National Clearinghouse for Corporate Matching Gift Information, Council for Advancement and Support of Education, Washington, DC*

*Vincent J. Serritella, Regional Vice President, National Alliance of Business, Chicago, IL*

---

## ■ CONVERSATION WITH C. PATRICK BABCOCK

### UNIVERSITY MEETING ROOM #1

C. Patrick Babcock has spent 26 years in state service. In addition to his current position as Director of Social Services, Mr. Babcock has held the positions of Director, Office of Drug Abuse and Alcoholism; Director, Office of Services to the Aging; Director, Department of Labor; and Director, Department of Mental Health. His broad experiences under both Republican and Democratic administrations reflect the issues of the 90s.

Moderator: *Glenn F. Kossick, President, Metro Health Foundation, Detroit*

Speaker: *C. Patrick Babcock, Director, Department of Social Services, Lansing*

## ■ PLACING ISSUES ON THE MASS MEDIA AGENDA

### UNIVERSITY MEETING ROOM #2

The mass media represent important arenas for public education and debate, with the power to bring public attention to issues and to shape public understanding. This session will explore how funders and their grantees can work closer with the mass media to harness this potential for public education.

- Moderator: *Judy Samelson, Director of Communications, Charles Stewart Mott Foundation, Flint*
- Speakers: *Jane Aldrich, Anchorwoman, WLNS TV-6, Lansing*  
*Kip Bobne, Marketing & Promotions Director, WSYM TV-47, Lansing*  
*Benjamin J. Burns, Editor & Publisher, Adams Michigan Newspapers, Mt. Clemens*  
*Susan Carter, News Anchor, WWJ, Southfield*
- 

## ■ THE HIDDEN HANDICAP: READING & RELATED LANGUAGE LEARNING PROBLEMS FROM THREE PERSPECTIVES

### EXECUTIVE TRAINING ROOM

A significant number of youngsters have serious difficulty in learning to read, spell, and write. The problem is discussed by; (1) a public school administrator who has built a model program response to this problem, (2) a private sector education involved in both the provision of remedial services and training of teachers; and (3) a probate judge who examines the problem from the perspective of young people with reading and related language deficiencies who come to the attention of the juvenile justice system.

- Moderator: *Barbara J. Brown, President, Talbert & Leota Abrams Foundation, Lansing*
- Speakers: *Marcia Boznango, Principal, Edgewood Elementary School, Okemos*  
*John C. Howell, Director/Research, Michigan Dyslexia Institute, Lansing*  
*John T. Steketee, Judge, Probate Court, Grand Rapids*
- 

## ■ PLENARY CLOSING LUNCHEON 12:15 - 2:00 p.m.

### GRAND BALLROOM

Come and enjoy an "express" lunch while exchanging ideas with your colleagues.

Roundtable discussions on selected topics will be led by moderators. Information on the topics and moderators will be available in your registration packet. This promises to be a fun-and-informational luncheon.

## **BOARD OF TRUSTEES & OFFICERS**

### **Officers:**

*Judith S. Hooker, Chair*  
*Donald A. Lindow, Vice Chairman-Corporate*  
*Leonard W. Smith, Vice Chairman-Private*  
*Mariam C. Noland, Vice Chairman-Community*  
*Richard K. Rappleye, Treasurer*  
*Dorothy A. Johnson, President & Secretary*

### **Board of Trustees:**

*Elizabeth H. Binda, Vice President & Trustee, Guido A. & Elizabeth H. Binda Foundation, Battle Creek*  
*Leo J. Brennan, Jr., Executive Director, Ford Motor Company Fund, Dearborn*  
*William A. Diaz, Program Officer, Ford Foundation, New York*  
*Herbert H. Dow, President, Herbert H. & Grace A. Dow Foundation, Midland*  
*Robert A. Fisher, President & Trustee, Frank S. & Mollie S. VanDervoort Memorial Foundation, Lansing*  
*Robert E. Hency, Director of Special Projects, W.K. Kellogg Foundation, Battle Creek*  
*Willard J. Hertz, Vice President, Charles Stewart Mott Foundation, Flint*  
*Judith S. Hooker, Trustee, Robert L. & Judith S. Hooker Foundation, Grand Rapids*  
*Gilbert Hudson, President, Hudson-Webber Foundation, Detroit*  
*Patricia B. Johnson, Executive Director, Muskegon County Community Foundation, Muskegon*  
*Howard D. Kalleward, Trustee, Dorothy U. Dalton Foundation, Kalamazoo*  
*Donald A. Lindow, First Vice President, NBD, N.A., Detroit*  
*John E. Marshall III, President, The Kresge Foundation, Troy*  
*Mariam C. Noland, Executive Director, Community Foundation for Southeastern Michigan, Detroit*  
*W. Calvin Patterson, III, Executive Director, McGregor Fund, Detroit*

*John W. Porter, Trustee, Charles Stewart Mott Foundation, Flint*  
*Margaret A. Riecker, President, Harry A. & Margaret D. Towsley Foundation, Midland*  
*Leonard W. Smith, President, The Skillman Foundation, Detroit*  
*Stephen E. Upton, President, Whirlpool Foundation, Benton Harbor*  
*William V. Weatherston, Consultant, The Stroh Brewery Company, Detroit*  
*Peter M. Wege, Vice Chairman/Trustee, Steelcase Corporation/Steelcase Foundation, Grand Rapids*

## **18TH ANNUAL CONFERENCE PROGRAM COMMITTEE**

### **Honorary Chairpersons:**

*Esther S. Gerstacker, Treasurer, The Midland Foundation*  
*Carl A. Gerstacker, Vice President & Treasurer, Rollin M. Gerstacker Foundation and Elsa U. Pardee Foundation*

### **Program Chairman:**

*Leo J. Brennan, Jr., Executive Director, Ford Motor Company Fund, Dearborn*

### **Committee:**

*Kathryn A. Agard, Program Director, Community Foundations, Council of Michigan Foundations, Grand Haven*  
*Barbara Baker, First Vice President, Michigan National Bank, Farmington Hills*  
*Elizabeth H. Binda, Vice President & Trustee, Guido A. & Elizabeth H. Binda Foundation, Battle Creek*  
*Robert S. Collier, Executive Director, Rotary Charities of Traverse City*  
*Robert A. Fisher, President & Trustee, Frank S. & Mollie S. VanDervoort Memorial Foundation, Lansing*  
*Rosemary Ging, Community Relations Manager, Little Caesars Enterprises, Inc., Detroit*  
*Ernest B. Gutierrez, Jr., Program Officer, The Kresge Foundation, Troy*  
*Vickie G. Heerlyn, Manager, Corporate Support Programs, The Upjohn Company; and Executive Director, The Upjohn Company Foundation, Kalamazoo*

Robert E. Hency, Director of Special Projects, W. K. Kellogg Foundation, Battle Creek

Judith S. Hooker, Trustee, Robert L. & Judith S. Hooker Foundation, Grand Rapids

Sandra G. Hussey, Member Services Director, Council of Michigan Foundations, Grand Haven

Ann Irish, Program Director, Muskegon County Community Foundation

Dorothy A. Johnson, President, Council of Michigan Foundations, Grand Haven

Glenn F. Kossick, President, Metro Health Foundation, Detroit

Lisa Wyatt Kowlton, Vice President, Battle Creek Community Foundation, Battle Creek

Mary L. Olson, Executive Director, Capital Region Community Foundation, Lansing

Lucas Pfeifferberger, President, Northeast Michigan Community Foundation, Alpena

Leonard W. Smith, President, The Skillman Foundation, Detroit

R. Sue Smith, Program Director, Corporate Giving Initiative, Council of Michigan Foundations, Detroit

John Snyder, Vice President, Personal Trust, Comerica Incorporated, Detroit

## HOST COMMITTEE MEMBERS

Mary L. Olson, (Co-Chair), Executive Director, Capital Region Community Foundation, Lansing

Robert A. Fisher, (Co-Chair), President & Trustee, Frank S. & Mollie S. VanDervoort Memorial Foundation, Lansing

William A. Bassette, Community Services Director, Consumers Power Company, Lansing

Barbara J. Brown, President, Talbert & Leota Abrams Foundation, Lansing

Helen H. Deliyanne, Vice President, Frank S. & Mollie S. VanDervoort Memorial Foundation, Lansing

Amy Fistler, Director, Health Education Foundation, E. Lansing

Joseph A. Frauenheim, President, Manufacturers National Bank, Lansing

Ann L. Gessert, Secretary, Frank S. & Mollie S. VanDervoort Memorial Foundation, Lansing

Alton L. Granger, Foundation Manager, Granger Foundation, Lansing

Sandra G. Hussey, Member Services Director, Council of Michigan Foundations, Grand Haven

Robert K. Kinning, President & CEO, First of America, Lansing

E.B. (Ted) Morley, Jr., President, Morley Brothers Foundation, Saginaw

Margaret A. Riecker, President, Harry A. & Margaret D. Towsley Foundation, Ann Arbor

Thomas L. Stevens, First Vice President, Michigan National Bank, Lansing

Jonathan R. White, Secretary, The John & Elizabeth Whiteley Foundation, Lansing

Ronald E. Weger, Treasurer, W.B. & Candace Thoman Foundation, Lansing

## ADVISORY CABINET

Dr. Russell G. Mawby, Chairman & CEO, W. K. Kellogg Foundation, Battle Creek

Malcolm G. Dade, Jr., Vice President, Detroit Edison, Detroit

Nathan B. Driggers, President, Harder Foundation, East Detroit

Nancy P. Feller, Associate General Counsel and Director, Legal Counsel, Ford Foundation, New York

Allan J. Fletcher, Vice President, Comerica Incorporated, Grosse Pointe

Nicholas M. Gabriel, Comptroller, Ford Foundation, New York

Herman F. Gertz, President, Herman & Irene Gertz Foundation, Monroe

Thomas W. Herbert, Vice President & Treasurer, The Kresge Foundation, Troy

Miles Jaffe, Esq., Honigman, Miller, Schwartz & Cohn, Detroit

Keith D. Jensen, President, The Jensen Foundation, Ann Arbor



James R. Kettler, Vice President,  
James A. Welch Foundation, Flint  
Ted L. Johnson, President Emeritus,  
The Fremont Area Foundation, Fremont  
Robert B. Miller, Chairman,  
The Miller Foundation, Battle Creek  
Carl F. Reitz, Secretary & Trustee,  
Besser Foundation, Alpena  
James M. Richmond, Chief Operating Officer,  
The Frey Foundation, Grand Rapids  
Robert A. Risselade, Trustee,  
The Wege Foundation, Grand Rapids  
Herbert F. Spieler, Executive Director,  
Jackson Foundation, Jackson  
Antony T. Sullivan, Secretary,  
Earhart Foundation, Ann Arbor  
Alfred H. Taylor, Jr., Chairman,  
The Kresge Foundation, Troy  
William S. White, Chairman, President  
& CEO, Charles Stewart Mott Foundation,  
Flint  
Sally J. Yerex, Second Vice President  
NBD Trust Company of Florida, Florida

## **COUNCIL OF MICHIGAN FOUNDATIONS MEMBERS**

### **Private Foundations**

Talbert & Leota Abrams Foundation  
The Acme Foundation  
Allen Foundation, Inc.  
Americana Foundation  
Amy Foundation  
Claude D. & Etta H. Andrews Foundation  
Charles Shirley Avery Foundation  
Baldwin Foundation  
Barstow Foundation  
Charles M. Bauervic Foundation  
Bauervic-Paisley Foundation  
Joseph E. Beauchamp Charitable Trust  
Alvin M. Bentley Foundation  
Besser Foundation  
Guido A. & Elizabeth H. Binda Foundation  
Donald B. Birtwistle Foundation  
Max D. & Constance M. Boersma Charitable  
Trust Foundation  
Arnold & Gertrude Boutell Memorial Fund

Charles & Jessie Brackett Memorial  
Scholarship Fund  
Viola E. Bray Charitable Trust  
Samuel Highby Camp Foundation  
William & Mary Carls Foundation  
Clarence & Grace Chamberlin Foundation  
Gerald W. Chamberlin Foundation, Inc.  
Christoff Family Charitable Foundation  
Cook Charitable Foundation  
Raymond M. & Jane E. Cracchiolo  
Foundation  
Dorothy U. Dalton Foundation  
DeLapa Family Foundation  
Detroit Neurosurgical Foundation  
The Charles DeVlieg Foundation  
The Richard M. & Helen DeVos Foundation  
Dexter Charitable Trust Fund  
Dexter Industries Charitable Trust  
The Herbert D. & Junia Doan Foundation  
Herbert H. & Barbara C. Dow Foundation  
The Herbert H. & Grace A. Dow Foundation  
Dyer-Ives Foundation  
Earhart Foundation  
Earl-Beth Foundation  
C. K. Eddy Family Memorial Fund  
Glenn D. Curtis Edmore Trust  
Erickson Foundation  
The J. F. Ervin Foundation  
H. T. Ewald Foundation  
Fenton Community Foundation  
The Fetzer Institute  
George R. & Elise M. Fink Foundation  
Fisher-Insley Foundation  
Ford Foundation  
The Frey Foundation  
Gannett Foundation  
The Rollin M. Gerstacker Foundation  
Herman & Irene Gertz Foundation  
Irving S. Gilmore Foundation, Inc.  
Gordon Christian Foundation  
Gordy Foundation, Inc.  
The Gornick Fund  
Granger Foundation  
Harder Foundation  
Charles Stewart Harding Foundation  
Harris Foundation  
Havirmill Foundation  
Health Education Foundation

Heartland Foundation  
David M. & Joyce F. Hecht Foundation  
Myrtle E. & William G. Hess Charitable Trust  
The Clarence & Jack Himmel Foundation  
James & Lynelle Holden Fund  
Robert L. & Judith S. Hooker Foundation  
Hougen Foundation  
Hudson-Webber Foundation  
Edward F. & Irma Hunter Foundation  
The Hurst Foundation  
The Iacocca Foundation  
India Foundation  
Michael Jeffers Memorial Fund  
The Jensen Foundation  
Jewish Community Foundation  
The Kantzler Foundation  
Kaufman Foundation  
The Miner S. & Mary Ann Keeler Fund  
W. K. Kellogg Foundation  
Kellogg Company 25-Year Employees'  
Fund, Inc.  
Elizabeth E. Kennedy Fund  
Knight Family Charitable and Educational  
Foundation  
Sam & Jane Kravitz Foundation  
The Kresge Foundation  
Helen Laidlaw Foundation  
The Greater Lansing Foundation  
The Lee Foundation  
The Lexo Charitable Trust  
Loosemore Foundation  
The Loutit Foundation  
Edward Lowe Foundation  
Lurie-Polasky Foundation  
The Lyon Foundation  
Malpass Foundation  
Alex & Marie Manoogian Foundation  
McColl-Batts Foundation  
McCurdy Memorial Scholarship Foundation  
McGregor Fund  
B. D. & Jane E. McIntyre Foundation  
C. S. & Marion F. McIntyre Foundation  
W. D. & Prudence A. McIntyre Foundation  
McKinley Foundation  
Orville D. & Ruth A. Merillat Foundation  
Metro Health Foundation  
Allen H. Meyers Foundation  
The Miller Foundation

Louise Tuller Miller Trust  
Francis Mills Foundation  
Monroe-Brown Foundation  
Morley Brothers Foundation  
Charles Stewart Mott Foundation  
Ruth Mott Fund  
Mukti Fund  
T. B. Murphy Foundation Charitable Trust  
Ernest L. Nicolay Foundation  
Allen E. & Marie A. Nickless Memorial  
Foundation  
Amos Nordman Foundation  
Charitable Trust  
Oscar P. & Louise H. Osthelder Charitable  
Foundation  
William M. & Mary E. Pagel Trust  
Elsa U. Pardee Foundation  
Herbert & Elsa Ponting Foundation  
The Power Foundation  
The Meyer & Anna Prentis Family  
Foundation, Inc.  
The Pryor Foundation  
Robbins Foundation  
Harold & Carolyn Robison Foundation  
Rotary Charities of Traverse City  
May Mitchell Royal Foundation  
Sage Foundation  
The Karla Scherer Foundation  
Schwartz Family Foundation  
Emily Scofield Scholarship Fund  
The Sebastian Foundation  
The William & Sarah Seidman Foundation  
The Nate S. & Ruth B. Shapero Foundation  
The Shiffman Foundation  
Simpson Foundation  
The Skillman Foundation  
George M. & Mabel H. Slocum Foundation  
St. Denys Foundation  
The Edward C. & Hazel L. Stephenson  
Foundation  
The Helmut Stern Foundation  
The Charles J. Strosacker Foundation  
The Keith W. Tantlinger Foundation  
A. Alfred Taubman Company  
W. B. & Candace Thoman Foundation  
Mary Thompson Foundation  
The Tiscornia Foundation, Inc.  
Harry A. & Margaret D. Towsley Foundation

*The Trico Foundation*  
*The Harold & Grace Upjohn Foundation*  
*W. E. Upjohn Institute for Employment  
Research*  
*Frederick S. Upton Foundation*  
*Frank S. & Mollie S. VanDervoort Memorial  
Foundation*  
*Vicksburg Foundation*  
*Vogt Foundation*  
*John & Rose Watson Scholarship Foundation*  
*The Wege Foundation*  
*The James A. Welch Foundation*  
*Samuel L. Westerman Foundation*  
*The Wetsman Foundation*  
*The John and Elizabeth Whiteley  
Foundation*  
*David M. Whitney Fund*  
*Wickson-Link Memorial Foundation*  
*Wigginton Educational Foundation*  
*The Wilkinson Foundation*  
*Matilda R. Wilson Fund*  
*Isadore & Beryl Winkelman Foundation*  
*Winship Memorial Scholarship Foundation*  
*The Wolohan Family Foundation*  
*Wren Foundation*

### **Community Foundations**

*Albion Civic Foundation*  
*Ann Arbor Area Foundation*  
*Battle Creek Community Foundation*  
*Bay Area Community Foundation*  
*Berrien Community Foundation*  
*Buchanan Area Foundation*  
*Cadillac Community Foundation*  
*Capital Region Community Foundation*  
*Civic Foundation of Chelsea*  
*Colon Foundation*  
*Community Foundation for Southeastern  
Michigan*  
*Community Foundation of Greater Flint*  
*Community Heritage Foundation of Eaton  
Rapids*  
*Four County Foundation*  
*Greater Frankenmuth Area Community  
Foundation*  
*The Fremont Area Foundation*  
*Grand Haven Area Community Foundation*  
*Grand Rapids Foundation*

*Holland Community Foundation*  
*The Jackson Foundation*  
*Kalamazoo Foundation*  
*Leelanau Community Foundation*  
*Ludington Area Foundation*  
*Manistee County Foundation*  
*Marquette Community Foundation*  
*Marshall Civic Foundation*  
*Midland Foundation*  
*Community Foundation of Monroe County*  
*Muskegon County Community Foundation*  
*Northeast Michigan Community Foundation*  
*Greater Rochester Area Community  
Foundation*  
*Community Foundation of St. Clair County*  
*Saginaw Community Foundation*  
*Shiawasee Foundation*  
*Zeeland Community Foundation*

### **Banks**

*Chemical Bank & Trust Company, Midland*  
*Citizens Commercial & Savings Bank, Flint*  
*Citizens Trust, Ann Arbor*  
*Citizens Trust & Savings Bank, South Haven*  
*Comerica Incorporated, Detroit*  
*First of America-Michigan, Kalamazoo*  
*Manufacturers National Bank of Detroit,  
Detroit*  
*Michigan National Bank, Grand Rapids*  
*NBD Bank, N.A., Detroit*  
*NBD Genesee Bank, Flint*  
*NBD Grand Rapids, N.A., Grand Rapids*  
*Old Kent Bank and Trust Co., Grand Rapids*  
*Second National Bank, Saginaw*

### **Corporate Foundations & Corporations**

*Allied Automotive*  
*Ameritech Publishing, Inc.*  
*ANR Pipeline Company*  
*Batts Foundation*  
*Blue Cross/Blue Shield of Michigan*  
*The Borman's, Inc. Fund*  
*Chrysler Corporation Fund*  
*Consumers Power Company*  
*Dayton Hudson Department Store Company*  
*Delta Dental Fund*  
*Detroit Edison*

*Domino's Foundation*  
*The Dow Chemical Company Foundation*  
*Dow Corning Foundation*  
*Federal-Mogul Corporation Charitable Trust*  
*Fibre-Converters Foundation, Inc.*  
*Ford Motor Company Fund*  
*GTE Telephone Operations, North Area*  
*General Motors Foundation*  
*The Gerber Companies Foundation*  
*JSJ Foundation*  
*Kellogg Company*  
*Kowalski Sausage Charitable Trust*  
*Kysor Industrial Corporation Foundation*  
*Lacks Enterprises, Inc.*  
*La-Z-Boy Chair Foundation*  
*Little Caesars Enterprises, Inc.*  
*Masco Corporation Charitable Trust*  
*Meryyn's*  
*Michigan Bell Telephone Company*  
*Michigan Consolidated Gas Company*  
*Michigan Health Care Education and*  
*Research Foundation, Inc.*  
*Midland Cogeneration Venture*  
*Monroe Auto Equipment Foundation Trust*  
*The Pistons-Palace Foundation*  
*Prince Foundation*  
*Scott Paper Company Foundation*  
*SPX Foundation*  
*Simpson Industries Fund*  
*Steelcase Foundation*  
*A. M. Todd Company Foundation*  
*Trans Continental Airlines Foundation*  
*UNISYS*  
*The Upjohn Company*  
*Whirlpool Foundation*  
*Wolverine World Wide Foundation*

## ■ SMOKING POLICY

During regularly scheduled conference sessions, smoking will be permitted only at the luncheon sessions. When facing the head table, the smoking section will be on your left.

**No smoking is permitted during any other sessions.**

## ■ THE GATHERING PLACE

The Gathering Place will serve as the meeting ground for conference registrants and will include a variety of features of interest to conference registrants. In addition to member annual reports, CMF will display publications available through the office. The Foundation Center Regional Collection Libraries will have their resource materials on display.

The annual report display will be located in the Gathering Place. Copies are complimentary and are available as long as supplies last. Please honor any notations of "For Display Only."

Exhibitors wishing to ship remaining copies home following the conference are responsible for all packing and shipping arrangements.

## ■ MESSAGE CENTER

The Message Center is located next to the Conference Registration Desk and will be accessible during conference registration hours. Conference registrants are urged to check the message board on a regular basis.

Because registrants have few opportunities to check the message board, you are encouraged to have your messages left with the hotel through the message service operator.

## ■ PARKING

Bell service is available at the front entrance of the Clarion Hotel on Cedar Street. Free lighted parking is available in the Clarion Hotel lots.

## **CHECK-IN/CHECK-OUT TIME**

Check-in time at the Clarion Hotel is after 3:00 p.m. Room assignments prior to 3:00 p.m. are on availability basis. Luggage may be stored with the Bell Captain.

Check-out time at the Clarion Hotel is 12:00 p.m. Luggage may be stored with the Bell Captain prior to departure.

## **ACKNOWLEDGEMENTS**

CMF is most grateful to the following members for their additional Conference support:

*Talbert & Leota Abrams Foundation  
Capital Region Community Foundation  
Consumers Power Company  
Dykema Gossett  
First of America - Central  
Health Education Foundation  
Manufacturers National Bank  
Michigan National Bank & Fidelity  
Investments  
Frank S. & Mollie S. VanDervoort  
Memorial Foundation*

## **Designs/Production: Program and Mailers**

*Robert E. Hency, Director of Special Projects, W. K. Kellogg Foundation, Battle Creek*

## **Conference Coordinator**

*Sandra G. Hussey, Member Services Director, Council of Michigan Foundations, Grand Haven*

## **Photographer**

*Kevin A. Beswick, Photographer, Steelcase Inc., Grand Rapids*

## **Staff**

*Kathryn A. Agard, Program Director, Community Foundations  
Pamela A. Bitzer, Secretary/Receptionist  
Timothy M. Breed, Editor, The Michigan Scene\*  
Judy M. Carl, Staff Associate  
Jeri L. Fischer, Staff Associate  
Sandra G. Hussey, Member Services Director  
Dorothy A. Johnson, President  
Jane F. Morgan, Program Associate, State of Michigan/Community Foundation Energy Initiative\*  
Linda B. Patterson, Administrative Director  
R. Sue Smith, Program Director, Corporate Giving Initiative  
Judith A. Steudle, Secretary, Community Foundation Project  
Marion J. Stokes, Librarian\**

\*part time

# PROGRAM SESSION CHECKLIST

## ■ WEDNESDAY, OCTOBER 31

11:00 a.m. - 7:30 p.m.

Registration

**CONFERENCE CENTER LOBBY**

Gathering Place

**BOARD ROOM**

11:00 a.m. - 5:00 p.m.

Speakers Room

**DIRECTORS ROOM, LOWER LEVEL**

11:00 a.m. - 1:30 p.m.

Board of Trustees Meeting/Luncheon

**IMPERIAL ROOM**

2:00 - 5:00 p.m.

Lansing Area Tours

5:00 - 5:30 p.m.

Conference & New Member Orientation

**EXECUTIVE TRAINING ROOM**

5:30 - 6:00 p.m.

Advisory Cabinet Meeting

**DIRECTORS ROOM, LOWER LEVEL**

6:00 - 6:45 p.m.

Opening Reception

**ATRIUM, CLARION HOTEL**

7:00 - 7:50 p.m.

Keynote Address - Education in Michigan

**GRAND BALLROOM, E**

8:00 - 9:30 p.m.

Dinner

**GRAND BALLROOM, F-J**

9:30 p.m.

Afterglow

**ATRIUM, CLARION HOTEL**

## ■ THURSDAY, NOVEMBER 1

7:00 a.m. - 6:00 p.m.

Registration

**CONFERENCE CENTER LOBBY**

Gathering Place

**BOARD ROOM**

Speakers Room

**DIRECTORS ROOM, LOWER LEVEL**

7:00 - 7:30 a.m.

Early Bird Coffee

**BOARD ROOM**

7:15 - 7:45 a.m.

Buffet Breakfast

**GRAND BALLROOM, F-J**

7:45 - 8:15 a.m.

CMF Annual Members Meeting

**GRAND BALLROOM, F-J**

8:30 - 10:00 a.m.

Community Information Track I

**EXECUTIVE TRAINING ROOM**

Health Care Track I

**UNIVERSITY MEETING ROOM #2**

Youth Track I

**UNIVERSITY MEETING ROOMS #3 & #4**

Environment Track I

**GRAND BALLROOM, B-C**

Community Foundation Basics

**UNIVERSITY MEETING ROOM #1**

Grantmaking Basics

**IMPERIAL ROOM**

10:00 - 10:30 a.m.

Refreshment Break

**CONFERENCE CENTER LOBBY**

10:30 a.m. - 12:00 noon

Community Information Track II

**EXECUTIVE TRAINING ROOM**

Health Track II

**UNIVERSITY MEETING ROOM #2**

Youth Track II

**UNIVERSITY MEETING ROOMS #3 & #4**

Environment Track II

**GRAND BALLROOM, B-C**

Community Foundations

**GRAND BALLROOM, E**

Family Foundations

**IMPERIAL ROOM**

12:30 - 2:00 p.m.

Donors Platform/Plenary Luncheon

**GRAND BALLROOM**

2:30 - 4:00 p.m.

Community Foundation Track III

**EXECUTIVE TRAINING ROOM**

Youth Track III

**UNIVERSITY MEETING ROOMS #3 & #4**

Conversation with William S. White

**UNIVERSITY MEETING ROOM #2**

AIDS and HIV

**IMPERIAL ROOM**

Scholarship Roundtable

**UNIVERSITY MEETING ROOM #1**

Community Foundations

**GRAND BALLROOM, E**

Foundation Center Regional Collections  
Meeting

**GRAND BALLROOM, D**

4:00 - 4:15 p.m.

Refreshment Break

**CONFERENCE CENTER LOBBY**

4:15 - 5:00 p.m.

Issues Facing the 90s

**GRAND BALLROOM, G-J**

5:00 - 5:45 p.m.

Reception

**ATRIUM, CLARION HOTEL**

5:45 - 6:30 p.m.

Shuttle service to Michigan Library

**CLARION HOTEL LOBBY**

6:15 - 7:30 p.m.

Tour - Michigan Library & Historical Center

7:45 - 9:30 p.m.

Dinner

**MICHIGAN LIBRARY & HISTORICAL  
CENTER, THIRD FLOOR**

9:30 - 10:00 p.m.

Shuttle service to Clarion Hotel

9:30 - 11:00 p.m.

Afterglow

**ATRIUM, CLARION HOTEL**

**FRIDAY, NOVEMBER 2**

---

*7:00 a.m. - 12:30 p.m.*

Registration

**CONFERENCE CENTER LOBBY**

Gathering Place

**BOARD ROOM**

Speakers Room

**DIRECTORS ROOM - LOWER LEVEL**

*7:00 - 7:30 a.m.*

Early Bird Coffee

**BOARD ROOM**

*7:00 - 8:15 a.m.*

Community Foundation Breakfast Meeting

**GRAND BALLROOM, F**

Nurturing the Philanthropists of Tomorrow -  
Breakfast Meeting

**IMPERIAL ROOM**

*7:30 - 8:15 a.m.*

Buffet Breakfast

**GRAND BALLROOM, G-J**

*8:30 - 10:00 a.m.*

Community Foundation I

**GRAND BALLROOM, E**

Corporate Giving Session I

**UNIVERSITY MEETING ROOMS #3 & #4**

Investment Seminar

**EXECUTIVE TRAINING ROOM**

Community & Corrections - Can They Work  
Together?

**UNIVERSITY MEETING ROOM #2**

Washington Update

**UNIVERSITY MEETING ROOM #1**

*10:00 - 10:30 a.m.*

Refreshment Break

**CONFERENCE CENTER LOBBY**

*10:30 - 12:00 noon*

Community Foundations II

**GRAND BALLROOM, E**

Corporate Giving Session II

**UNIVERSITY MEETING ROOMS #3 & #4**

Conversation with C. Patrick Babcock

**UNIVERSITY MEETING ROOM #1**

Placing Issues on the Mass Media Agenda

**UNIVERSITY MEETING ROOM #2**

Hidden Handicap: Dyslexia

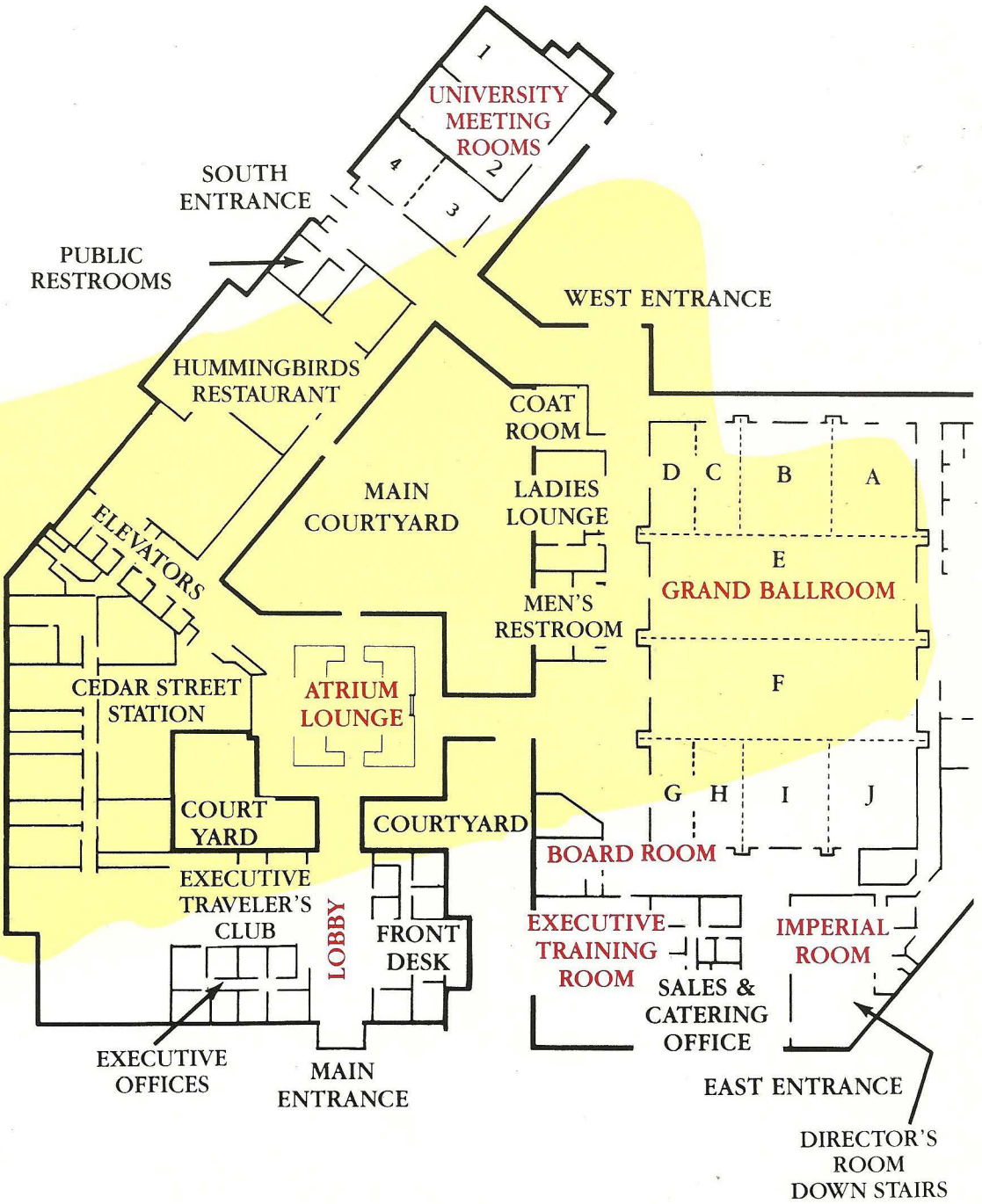
**EXECUTIVE TRAINING ROOM**

*12:15 - 2:00 p.m.*

Plenary Closing Luncheon

**GRAND BALLROOM**







---

## **Council of Michigan Foundations**

The Council of Michigan Foundations (CMF) is a nonprofit association of Michigan grantmakers, including private and community foundations, banks serving trusts, and corporations with giving programs. CMF began in 1973 on the premise that philanthropy is more effective when grantmakers have the opportunity for continuing education, communication and information.

Council of Michigan Foundations  
P.O. Box 599  
Grand Haven, MI 49417  
(616)842-7080

**19th Annual CMF Conference**  
**November 13 - 15, 1991**  
**Westin Hotel, Detroit**

Display materials for the 18th Annual CMF Conference are courtesy of participating foundations; The Foundation Center in New York; and Michigan State University Library Regional Collection.