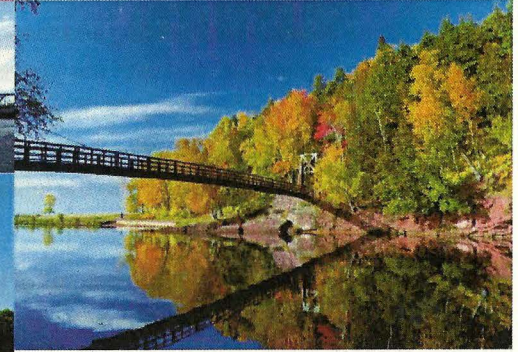
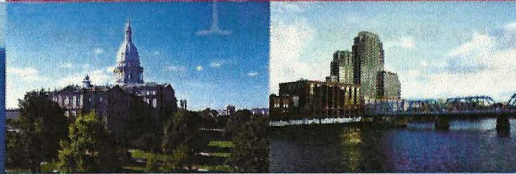
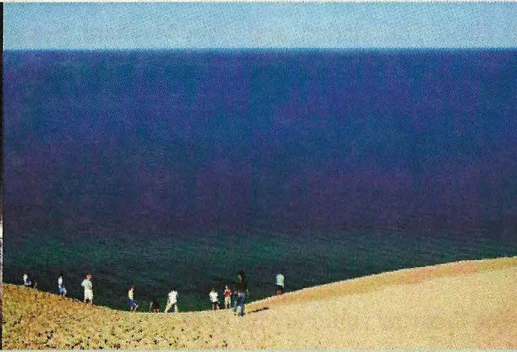


**CMF** Council of Michigan Foundations  
 Serving grantmakers. Advancing giving.



2007-2008 ANNUAL REPORT

KNOWLEDGE

relationships

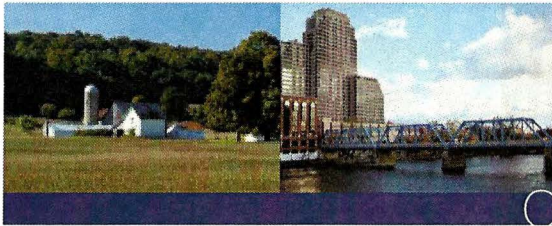
servant and ethical LEADERSHIP

DIVERSITY & INCLUSION

*[Signature]*  
 President & CEO

*[Signature]*  
 Treasurer





## our mission

To strengthen, promote and increase philanthropy in Michigan.

Dear Members and Friends:

What a year it has been for philanthropy and for our state and nation! There are countless examples where Michigan foundations are collaborating in new ways to help our communities, regions and states respond to the economic pressures of transforming Michigan to a knowledge-based economy.

Through our work in Lansing, partnering with the Office of the Foundation Liaison, CMF convened foundations and state leaders on issues ranging from foreclosures to college access, asset building and food policy. We are proud that foundations have stepped up to help deal with the growing foreclosure crisis affecting so many children, families and neighborhoods. From rural Benzie and Newaygo counties to Grand Rapids and Southeast Michigan, CMF members are assisting their communities in responding to the immediate crisis as well as planning for the long term impact.

This annual report shares highlights of how CMF and our members are achieving our mission to *strengthen, promote and increase* philanthropy in Michigan, with the cover showcasing the important values underlying that mission. This year, we were pleased to undertake new work on the value of diversity and inclusion, in particular, by launching a five-year initiative called *Transforming Michigan Philanthropy through Diversity & Inclusion* with the help of a lead grant from The Kresge Foundation. CMF believes that leadership in this area is a preferred course to being legislated by government and that this work is critical to Michigan's transformation and serving our state's residents effectively.

Recognizing the value of the Internet as both a networking and educational tool, CMF launched its redesigned web site – [michiganfoundations.org](http://michiganfoundations.org) – in fall 2007. Its new name more clearly communicates who CMF represents to the thousands of members and grantseekers accessing news, resources and information every day. The site also offers new functionalities – increasing the efficiency of our internal operations and offering members easy online registration, access to a searchable Knowledgebase of resources and more.

This year, CMF introduced new tools to help members be more effective. Two examples are *Ten Essential Responsibilities of Foundation Board Chairs*, produced in partnership with BoardSource, and a marketing tool-kit for community foundations to use with the county-by-county Transfer of Wealth analysis.

At our 2007 Annual Meeting during the 35th Annual Conference in Dearborn, we thanked retiring trustees Julie Fisher Cummings, trustee of the Max M. and Marjorie S. Fisher Foundation, and Libby Maynard, trustee of the Heron Oaks Foundation, for each of their nine years of service. We especially noted their leadership as board chair and Government Relations Committee chair respectively. And, we welcomed four new trustees: Caroline Chambers, president, Comerica Charitable Foundation in Detroit; Tom Cook, executive director, Cook Family Foundation in Owosso; Carol Paine-McGovern, president, Paine Family Foundation in Grand Rapids; and Tom Porter, president, Porter Family Foundation in Ann Arbor.

The financial summary on page 8 confirms that CMF's financial position remains strong. Rehmann Robson, our auditor, has provided an unqualified audit for the fiscal year ending March 31, 2008. Visit [michiganfoundations.org](http://michiganfoundations.org) or the CMF office for a copy.

We thank you for your support and look forward to you joining us at the 36th Annual Conference, *Achieving Michigan's Transformation*, on October 12-14, 2008 at the Amway Grand Plaza Hotel in Grand Rapids. We encourage you to also attend the Annual Members Meeting on October 13 during the conference to learn about our future plans and share your input.

**Diana R. Sieger**

Chairperson

**Robert S. Collier**

President & CEO



## board of trustees

Diana R. Sieger, Chairperson  
Grand Rapids Community  
Foundation

Elizabeth A. Cherin, Vice Chair –  
Community Foundations  
Fremont Area Community  
Foundation

Melonie B. Colaianne  
MASCO Corporation Foundation –  
Vice Chair – Corporate Foundations

Betsy Upton Stover, Vice Chair –  
Private Foundations  
Frederick S. Upton Foundation

Amanda Van Dusen, Secretary  
Miller, Canfield, Paddock and  
Stone, P.L.C.

Phillip H. Peters, Treasurer  
Charles Stewart Mott Foundation

Robert S. Collier, President  
Council of Michigan Foundations

Susan K. Broman  
Steelcase Foundation

Caroline E. Chambers  
Comerica Charitable Foundation

John Colina  
Colina Foundation

Thomas B. Cook  
Cook Family Foundation

David O. Egner  
Hudson-Webber Foundation

Rev. J. Louis Felton  
Kalamazoo Community Foundation

George F. Francis, III  
Blue Cross Blue Shield of Michigan  
Foundation

Russell L. Gabier  
Irving S. Gilmore Foundation

Allan D. Gilmour  
Community Foundation for  
Southeast Michigan

Carol A. Goss  
The Skillman Foundation

Wesley H. Maurer, Jr.  
Mackinac Island Community  
Foundation

Russell G. Mawby  
CMF Advisory Cabinet

Rachel Mraz  
Eileen and Brian DeVries  
Foundation

David K. Page  
Community Foundation for  
Southeastern Michigan

Carol Paine-McGovern  
Paine Family Foundation

Thomas S. Porter  
Porter Family Foundation

David S. Sebastian  
The Sebastian Foundation

Gerald K. Smith  
Detroit Youth Foundation

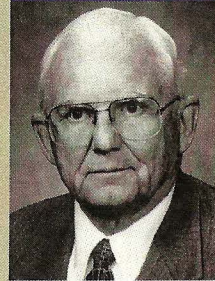
Sterling K. Speirn  
W.K. Kellogg Foundation

Margaret E. Thompson  
Harry A. and Margaret D.  
Towsley Foundation

Christian A. Velasquez  
Midland Area Community  
Foundation

Daniel J. Wyant  
Edward Lowe Foundation

Lloyd J. Yeo  
Wickson-Link Memorial  
Foundation



## special tribute

**Lloyd J. Yeo**  
**President, Wickson-Link**  
**Memorial Foundation**  
**CMF Trustee, 1999-2008**



**Gerald K. Smith**  
**President & CEO, YouthVille Detroit**  
**CMF Trustee, 2000-2008**

The Council of Michigan Foundations (CMF) and Michigan's philanthropic community lost two great leaders and friends in 2008 with the passing of Lloyd Yeo in May and Gerald Smith in August. The CMF Board of Trustees extends these Resolutions of Tribute in their honor:

**RESOLVED** that the CMF Board of Trustees extends its appreciation to the family of Lloyd Yeo in gratitude for his dedicated service as trustee, treasurer, member of the Audit Committee and for his many years of leadership in strengthening and increasing philanthropy in Saginaw and Michigan.

**RESOLVED** that the CMF Board of Trustees extends its appreciation to the family of Gerald Smith in gratitude for his dedicated service as trustee, co-chair of the 35th Annual Conference, officer of the Michigan AIDS Fund, member of the Public Policy Committee and for his visionary and tireless leadership on behalf of the youth of Detroit as founder of the Detroit Youth Foundation.







## highlights for members

for a legislative and regulatory environment conducive to philanthropy.

Led by our Government Relations Committee, CMF members celebrated our **30th annual Foundations on the Hill** visits with Michigan Congressional Delegation members in Washington. Thanks to these vital relationships, Representative Levin introduced a bill to allow foundations to invest in **domestic hedge funds** without being penalized for capital gains. With CMF's urging, Michigan's Congressional members are taking the lead in pushing for an **extension of the IRA Charitable Rollover** – an ongoing CMF legislative priority.



2007 was a year of fiscal crisis for Michigan and the CMF Board of Trustees took a position on its negative impact on the state's nonprofit sector. We are pleased that the Legislature **continued the community foundation endowment tax credit** in the new Michigan Business Tax. CMF initiated an effort to amend the state's Limited Liability Corporation Act to create a new tool – the **Low-profit Limited Liability Corporation** – for foundations to use in partnership with the business sector for economic revitalization.

CMF also continued working closely with the Michigan Nonprofit Association on key events like **Nonprofit Day** to raise the visibility of the nonprofit sector and philanthropy in Lansing.

foundation staff and trustees about effective practice.

Michigan grantmakers gained knowledge about critical issues facing philanthropy and honed their professional skills through **nearly 60 CMF learning opportunities this year**.



CMF celebrated a milestone in October, hosting our **35th Annual Conference, Transforming Michigan...Leading, Innovating, Collaborating**, with keynoters including Harvard University Professors Ron Heifetz and Henry Louis Gates, author and consultant Sir Ken Robinson, AARP Executive Director & CEO Bill Novelli and game designer and researcher Jane McGonigal.

Other highlights included: a **GrantCraft workshop** on grantmakers' roles and a **Heart of Philanthropist Retreat**, both generously hosted at Seasons by The Fetzer Institute; a **Communications for Community Involvement Managers** course from Boston College Center for Corporate Citizenship; the popular

**Detroit Area Grantmakers** lunch and lecture series on topics such as community development, race, green jobs, the arts and healthcare; our **9th annual Family Foundations Retreat** at Crystal Mountain Resort for attendees spanning four generations; an ongoing **Family Philanthropy Teleconference Series** co-sponsored with the National Center for Family Philanthropy; the 3rd annual **Community Foundation CEO Retreat** with the Ohio Grantmakers Forum; teleconferences on the Form 990, 990-PF and investments; and youth grantmaker programs including the annual **Summer Leadership Conference** with attendees from across the U.S. and **public policy training** offered in partnership with the University of Michigan School of Social Work.

## national partners

- Alliance for Justice
- BoardSource
- Communications Network
- Council on Foundations
- Diversity in Philanthropy Project
- Forum of Regional Associations of Grantmakers
- Foundation Center
- GrantCraft
- Grantmakers for Effective Organizations
- Grantmakers in Aging
- National Center for Family Philanthropy
- Neighborhood Funders Group
- Philanthropy Awareness Initiative

## state partners

- Office of the Governor
- Office of the Attorney General
- Citizen's Research Council of Michigan
- City Connect Detroit
- Community Economic Development Association of Michigan
- Detroit Renaissance
- Dorothy A. Johnson Center for Philanthropy and Nonprofit Leadership at Grand Valley State University
- Michigan Association of United Ways
- Michigan Association for Evaluation
- Michigan Community Service Commission
- Michigan League of Human Services
- Michigan Nonprofit Association



# INCREASE

organized philanthropy in Michigan.

Michigan ranks fifth in the U.S. with total foundation assets of \$27.3 billion, more than 86% of which is held by CMF members. This year, the Foundation Center reported the creation of **92 new foundations in the state**. CMF contributed to that growth by **consulting with more than 45 individuals, corporations and professional advisors** to help them understand their organized giving options – including a corporate giving program in Ann Arbor-Washtenaw County for Google; updating the popular *Establishing a Charitable Foundation in Michigan* guide (4<sup>th</sup> edition); and launching a revised professional advisors area on michiganfoundations.org.

# LEAD

and support collaborative philanthropic responses to critical needs.

CMF is fortunate to have an active Public Policy Committee and the resources for two public policy fellows – the William C. Richardson Fellow in Public Policy & Philanthropy and the **Skillman Program Policy Fellow**, a new position established by CMF, The Skillman Foundation and the national Neighborhood Funders Group. These member led and member supported assets enable CMF to respond effectively to opportunities for Michigan at a time when great change is impacting our state.



In partnership with the **Office of the Foundation Liaison** to the Governor, CMF convened members to explore collaborative strategies for addressing critical issues facing Michigan. Highlights include: (1) a **human services** briefing with Ishmael Ahmed, director, Michigan Department of Human Services; (2) **economic development** teleconferences with regional economic development leaders; (3) **land use** convening with Michigan State University's Land Policy Institute; (4) **2-1-1** three-way interactive videoconference with the Michigan Association of United Ways; (5) **EngAGEMENT Initiative** briefings on aging residents' needs, supported by Grantmakers in Aging; (6) **education and workforce development** meetings with state policy leaders on promise zones and small high schools; and (7) a Michigan Grantmakers for Women and Girls briefing on **The White House Project** – a national initiative to engage more women in public service, which established an office in Michigan supported by CMF member foundations.

## MI philanthropy facts

CMF's 397 members represent over 86% of foundation assets in Michigan

National Statistics according to The Foundation Center

- 5th in total foundation assets at \$27.3 billion
- 8th in total foundation giving of \$1.5 billion
  - Top giving area – Public Affairs-Society Benefit at \$278 million
- 11th in number of foundations at 2,092

Source: Foundation Center 2006

## CMF staff leadership roles

### Council on Foundations (COF)

- Committee on Inclusion
- Standards & National Marketing Action Teams
- Public Policy Committee

### Forum of Regional Associations of Grantmakers

- Board of Trustees
- Technology Advisory Committee
- Grantmaker Education Task Force

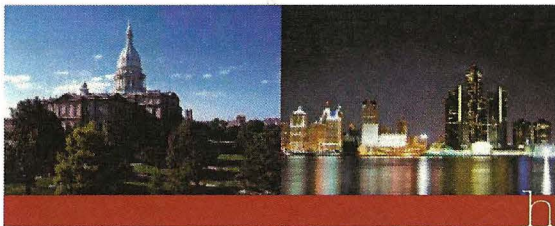
### Independent Sector

- 08 Annual Conference Committee
- Legislative & Regulatory Advisory Committee

### WINGS (Worldwide Initiatives for Grantmaker Support)

- Advisory Committee, WINGS-Community Foundation
- Management Committee, World Bank Global Fund for Community Foundations





## highlights for members

### NETWORK

Michigan grantmakers with each other and with grantseekers

Through the popular annual conference, retreats and education events CMF helped strengthen and expand the vital state-wide network of grantmakers. Several notable events included a **Spring Members Reception** at the Flint Institute of Arts and **Michigan Evenings** at the Council on Foundations' annual conference in Seattle and the Communications Network conference in Miami.



Members also connected on the issues they care about through **eight affinity groups and funder networks** (aging, arts, communications, early childhood, K-16 education, land use, Michigan's economy and women and girls). One of these, the **Communications Network-Michigan (CN-M)**, held its inaugural meeting and, through a partnership with the national Communications Network, became the first regional association sponsored network for foundation communications professionals in the nation. Seventy CMF member foundations are connected and served by CN-M. CMF created new listserves this year for CN-M and youth advisory council advisors.

For grantseekers, CMF co-hosted a **Grant Resources Face-to-Face workshop** for 300 nonprofits with Senator Carl Levin's office and co-sponsored the Michigan Nonprofit Association's **Nonprofit SuperConference**.

### PROMOTE

public understanding of and appreciation for the role of philanthropy

**CMF members' reflections on philanthropy were shared on Michigan Radio** stations WUOM 91.7 Ann Arbor/Detroit, WFUM-FM 91.1 Flint and WVGR 104.1 Grand Rapids during morning drive time in November. The broadcasts were produced as part of the **Michigan Philanthropy Oral History Project**, a partnership among CMF, StoryCorps, Michigan Radio and the Dorothy A. Johnson Center for Philanthropy and Nonprofit Leadership at Grand Valley State University (GVSU). Work also began to create a **project recording archive at the Steelcase Library at GVSU**. The Fetzer Institute generously supported the first two years of the project.



CMF continued its leadership in promoting the work of philanthropy by initiating the **Philanthropy 3D Project** with partners Donors Forum of Wisconsin, Indiana Grantmakers Alliance and the Philanthropy

Awareness Initiative. This innovative regional pilot is designed to increase influential leaders in the public, nonprofit and private sectors' understanding of and engagement with foundations in order to solve critical issues state issues. The project is supported by grants from The David and Lucille Packard Foundation and the Forum of Regional Associations of Grantmakers.

## launching michiganfoundations.org

Redesigned with more resources and a brand new name, functionality and sophisticated look, CMF's new web site – michiganfoundations.org – launched in fall 2007. Since then, hundreds of members are:

- Finding valuable resources in the **Knowledgebase** like sample policies, tip-sheets and tools for governing and operating their foundation effectively, compiled by the national network of 32 regional associations and their partners
- Connecting with colleagues through the **Enhanced Member Directory** with expanded search criteria and contact information for both organizations and individuals
- **Registering for CMF events or purchasing publications** securely and conveniently
- Accessing and **updating their individual member profile**, including contact information, communications preferences and password



Look for updates about other new resources on the way!



## Midwest Community Foundations' Ventures (MCFV)

MCFV added trustees from Ohio and Illinois this year, including the presidents of Ohio Grantmakers Forum and the Donors Forum (Illinois). Elizabeth Cherin, CMF trustee and president, Fremont Area Community Foundation, continues as MCFV board chair.

With support from participating community foundations in Illinois, Michigan and Ohio, the W.K. Kellogg and C.S. Mott Foundations, MCFV provided members a **Transfer of Wealth** data report on each county they serve, produced by the Center for Rural Entrepreneurship; a marketing tool kit; and technical assistance for using those tools effectively. A new web site was also launched at [www.midwestcommunityfoundations.org](http://www.midwestcommunityfoundations.org) to distribute the tools.

The **Access to Recreation Initiative**, which also includes Indiana, initiated research on how to impact public policy on access to recreation in all four states and awarded grants to four Michigan community foundations serving Lapeer County, Mt. Pleasant, St. Clair County and Southeast Michigan. Fourteen grants were also awarded in Indiana, Illinois and Ohio. A full list of recipients is available on [accesstorecreation.org](http://accesstorecreation.org).

The **Regional Marketing Initiative**, supported by the C.S. Mott Foundation, continued in Iowa, Maryland, South Carolina and Florida, with links to regional efforts in Michigan and California. This year, the John S. and John L. Knight Foundation also funded the Community Foundations of Florida's work to establish a statewide association structure and take initial steps toward collective marketing.

## Michigan AIDS Fund (MAF)

As public and media attention wanes on the domestic HIV/AIDS epidemic, MAF responded by **narrowing its focus and mission to HIV prevention in Michigan** and adding a public policy component to its work, supported by its first Public Policy Committee and public policy director. Goals included changing state law to increase access to sterile syringes to prevent HIV/AIDS and hepatitis C transmission;

and convening health professionals, service providers, social justice advocates, grantmakers and others to define critical HIV policy issues in Michigan. MAF published its **first report card on HIV/AIDS in Michigan**, awarding grades in four areas: Care and Treatment (B-); Funding (B-); HIV Prevention (C); and Public Policy (C). Wendy Lawson, trustee, McKinley Foundation continues as board chair.

## Learning to Give (LTG)

Ninety-seven Michigan schools are now participating in The LEAGUE powered by Learning to Give, more than doubling last year's number. Several exciting additions to the LTG web site – [learningtogive.org](http://learningtogive.org) – include: (1) **LEAGUE Learning Links** – five minute mini-lessons to prepare student captains for delivering lessons at

LEAGUE events; (2) six new **self-paced tutorials on philanthropy education for teachers**; (3) the eleventh **module on service learning**; and (4) an interactive **web page on philanthropy and financial literacy** for elementary students. Dorothy Johnson, trustee, W.K. Kellogg Foundation and James Kelly serve as board co-chairs.



## guiding principles

In November 2003, the CMF Board of Trustees adopted the following *Guiding Principles* as a condition of membership, in recognition of the need for all foundations to strive to maintain the public trust in fulfilling their respective charitable purposes. These principles address the question often asked by the public – What do foundations stand for? A copy of the principles and suggested implementation strategies for each have been provided to all members and are available at [michiganfoundation.org](http://michiganfoundation.org).

- Adhere to the highest standards of ethical behavior in all foundation actions.
- Honor donor(s) intent.
- Have an identifiable active governing board – a decision-making body that sets and regularly reviews policies on: governance, including conflict of interest; grantmaking; finance and administration, including audit; and communications.
- Be accessible by having basic grantmaking information readily available regarding funding priorities and application requirements.
- Build constructive relationships based on mutual respect, candor, confidentiality and understanding with the public, applicants, grantees and donors.
- Strive to include the perspectives, opinions and experiences of the broadest possible cross-section of people to inform the foundation through its grantmaking, through the composition of its board, committees, staff and advisors/consultants and through its business practices.
- Support continuous learning by trustees, staff and grantees.

## treasurer's report

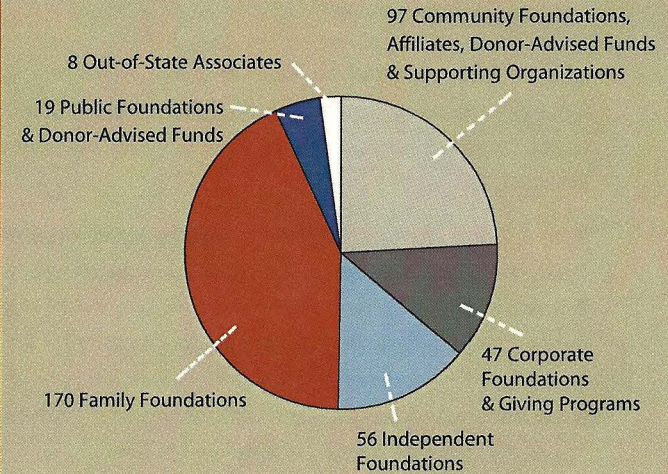
Rehmann Robson has issued an unqualified opinion on the combined financial statements of the Council of Michigan Foundations (CMF) and its three supporting organizations for the years ended March 31, 2008 and 2007. The Combined Statements of Activity and Changes in Net Assets, derived from the audited financial statements, reflect the detailed expenses of CMF's endowment funds, Midwest Community Foundations' Ventures, Learning to Give and Michigan AIDS Fund. A copy of the audited financial statements is available at [michiganfoundations.org](http://michiganfoundations.org).

This year, CMF's eleven endowment funds reached a market value of \$17 million, enabling us to respond to special opportunities like legislative initiatives, community foundation technical assistance and other statewide and national leadership activities throughout the year. The significant cash balance reflected in the attached statements is primarily made up of funds held for special projects that help further the missions of our members.



Phillip H. Peters, Treasurer

## member composition



For more information, contact Jeri Fischer, director, membership & special projects, at 616.842.7080 or visit [michiganfoundations.org](http://michiganfoundations.org).

## new members

We warmly welcome 9 new members.

- The Fred A. and Barbara Erb Family Foundation
- Fair Food Foundation
- Fifth Third Foundation
- Grand Traverse Regional Community Foundation
- Ed & June Kellogg Foundation
- Michigan Masonic Charitable Foundation
- The Pokagon Fund
- Paul & Peggy Rowley Donor Advised Fund
- The Art and Mary Schmuckal Family Foundation



**CMF AND SUPPORTING ORGANIZATIONS**  
**CONDENSED COMBINED FINANCIAL STATEMENTS – YEARS ENDED MARCH 31, 2008 & 2007**

COMBINED BALANCE SHEETS	March 31			March 31	
	2008	2007		2008	2007
<b>ASSETS</b>			<b>LIABILITIES</b>		
Cash	\$13,650,242	\$15,832,611	Accounts payable & other liab.	\$719,184	\$382,296
Investments	20,236,904	20,296,232	Grants payable	1,414,500	20,500
Grants & contributions receivable	5,942,594	13,083,581			
Prepaid expenses & other assets	85,866	79,637	<b>Total liabilities</b>	<b>2,133,684</b>	<b>402,796</b>
Property & equip net of depreciation	406,743	456,683			
			<b>NET ASSETS</b>		
			Unrestricted	13,351,209	13,252,336
			Temporarily restricted	16,745,303	28,001,459
			Permanently restricted	8,092,153	8,092,153
			<b>Total net assets</b>	<b>38,188,665</b>	<b>49,345,948</b>
<b>Total assets</b>	<b>\$40,322,349</b>	<b>\$49,748,744</b>	<b>Total liabilities and net assets</b>	<b>\$40,322,349</b>	<b>\$49,748,744</b>

**COMBINED STATEMENTS OF ACTIVITIES AND CHANGES IN NET ASSETS**

	CMF General Operations & Special Projects	CMF Endowment Funds	Midwest Community Foundations' Ventures	Learning to Give	Michigan AIDS Fund	2008 Total	2007 Total
<b>SUPPORT AND REVENUES</b>							
Member contributions	\$994,262					\$994,262	\$1,013,042
Grants & other contributions	1,177,178	\$6,500	\$514,368	\$21	\$651,870	2,349,937	22,851,492
Conferences	498,629	36,124				534,753	566,322
Publications	27,643	1,300		21		28,964	72,542
Investment income & other	165,562	(150,752)	504,666	62,611	17,889	474,754	2,814,843
<b>Total support revenue</b>	<b>2,863,274</b>	<b>(106,828)</b>	<b>1,019,034</b>	<b>(62,569)</b>	<b>669,759</b>	<b>4,382,670</b>	<b>27,318,241</b>
<b>EXPENSES</b>							
Grants	1,462,989	76,300	7,915,204	814,250	383,575	10,652,318	9,669,900
Conferences & meetings	508,402	76,577	9,234	4,293	37,458	635,964	564,307
Communications	103,299	3,790			3,696	110,785	171,154
Fundraising	56,849				79,233	136,082	157,883
Professional fees	572,572	57,258	486,229		119,323	1,235,382	1,062,695
Depreciation	96,687		16,381	1,581	8,873	123,522	159,800
Programming/member services	1,560,127	347,146	113,900	311,099	313,628	2,645,900	2,728,214
<b>Total Expenses</b>	<b>4,360,925</b>	<b>561,071</b>	<b>8,540,948</b>	<b>1,131,223</b>	<b>945,786</b>	<b>15,539,953</b>	<b>14,513,953</b>
Changes in net assets	(1,497,651)	(667,889)	(7,521,914)	(1,193,792)	(276,027)	(11,157,283)	12,804,288
Transfer from other funds	(726,429)	720,969	5,460				
Net assets at beginning of year	7,721,221	16,984,733	18,633,168	5,221,522	785,304	49,345,948	36,541,660
<b>Net assets at end of year</b>	<b>\$5,497,141</b>	<b>\$17,037,803</b>	<b>\$11,116,714</b>	<b>\$4,027,730</b>	<b>\$509,277</b>	<b>\$38,188,665</b>	<b>\$49,345,948</b>

Note: Statement format not in accordance with GAAP



# our members

## **COMMUNITY FOUNDATIONS**

Albion Community Foundation  
Allegan County Community Foundation  
Ann Arbor Area Community Foundation  
Baraga County Community Foundation  
Barry Community Foundation  
Battle Creek Community Foundation  
Bay Area Community Foundation  
Berrien Community Foundation  
Branch County Community Foundation  
Cadillac Area Community Foundation  
Capital Region Community Foundation  
Charlevoix County Community Foundation  
Dickinson Area Community Foundation  
Community Foundation of Greater Flint  
Four County Community Foundation  
Greater Frankenmuth Area Community Foundation  
Fremont Area Community Foundation  
Grand Haven Area Community Foundation  
Grand Rapids Community Foundation  
Grand Traverse Regional Community Foundation\*  
Gratiot County Community Foundation  
Greenville Area Community Foundation  
Hillsdale County Community Foundation  
The Community Foundation of  
Holland/Zeeland Area  
Huron County Community Foundation  
The Jackson County Community Foundation  
Kalamazoo Community Foundation  
Keweenaw Community Foundation  
Lapeer County Community Foundation  
Leelanau Township Community Foundation  
Lenawee Community Foundation  
M & M Area Community Foundation  
Mackinac Island Community Foundation  
Manistee County Community Foundation

Marquette Community Foundation  
Marshall Community Foundation  
Michigan Gateway Community Foundation  
Midland Area Community Foundation  
Community Foundation of Monroe County  
Mt. Pleasant Area Community Foundation  
Community Foundation for Muskegon County  
Community Foundation for Northeast Michigan  
Otsego County Community Foundation  
Petoskey-Harbor Springs Area  
Community Foundation  
Community Foundation of Greater Rochester  
Roscommon County Community Foundation  
Saginaw Community Foundation  
Sanilac County Community Foundation  
Shiawassee Community Foundation  
Community Foundation for Southeast Michigan  
Southfield Community Foundation  
Community Foundation of St. Clair County  
Sturgis Area Community Foundation  
Three Rivers Area Community Foundation  
Tuscola County Community Foundation  
Community Foundation of the Upper Peninsula

## **COMMUNITY FOUNDATION AFFILIATES**

Alger Regional Community Foundation  
Athens Area Community Foundation  
Bedford Community Foundation  
Chippewa County Community Foundation  
Clare County Community Foundation  
Clio Area Community Fund  
Constantine Area Community Foundation  
Coopersville Area Community Foundation  
Crystal Falls/Forest Park Area Community Fund  
Community Foundation for Delta County  
The Eaton County Community Foundation

Fenton Community Fund  
Grand Blanc Community Fund  
Homer Area Community Foundation  
Ionia County Community Foundation  
Iosco County Community Foundation  
Greater Ishpeming Area Community Fund  
Les Cheneaux Community Foundation  
Community Foundation for Mason County  
Mecosta County Community Foundation  
Missaukee Area Community Foundation  
Negaunee Area Community Fund  
North Central Michigan Community Foundation  
Norway Area Community Fund  
Community Foundation for Oceana County  
Osceola County Community Foundation  
Schoolcraft County Community Foundation  
Southeast Ottawa Community Foundation  
Sparta Community Foundation  
St. Ignace Area Community Foundation  
Straits Area Community Foundation  
Tahquamenon Area Community Foundation  
Wyoming Community Foundation

## **COMMUNITY FOUNDATION DONOR-ADVISED FUNDS**

Bay Harbor Foundation  
The Gilmour Fund  
Huckle Family Fund  
Iles Family Conservation Scholarship Fund  
F. Martin & Dorothy A. Johnson Donor Advised Fund  
Elizabeth Koegel Fund  
Paul & Peggy Rowley Donor Advised Fund\*

\*New Member as of April 1, 2008



## **CORPORATE GIVING PROGRAMS**

AAA Michigan  
American Axle and Manufacturing  
AT&T  
Blue Cross Blue Shield of Michigan  
Bodman L. L. P.  
Chemical Bank and Trust  
Citizens Bank-Flint  
Detroit Lions, Inc.  
Guardian Industries Corp.  
Lacks Enterprises, Inc.  
LaSalle Bank Wealth Management  
Macatawa Bank  
Michigan Automotive Compressor, Inc.  
Miller, Canfield, Paddock, and Stone, PLC  
Morgan Stanley  
Munder Capital Management  
National City / Allegiant  
Northern Trust Bank, FSB  
Plante & Moran, PLLC  
Rock Financial - A Quicken Loans Co.  
Smith Barney Citigroup Verizon

## **CORPORATE FOUNDATIONS**

Blue Cross Blue Shield of Michigan Foundation  
The Chrysler Foundation  
Comerica Charitable Foundation  
Consumers Energy Foundation  
Delta Dental Foundation  
DENSO North America Foundation  
The Dow Chemical Company Foundation  
Dow Corning Foundation  
DTE Energy Foundation  
Fibre Converters Foundation, Inc.  
Ford Motor Company Fund  
General Motors Foundation

Grand Rapids Label Foundation  
JPMorgan Chase Foundation  
JSJ Foundation  
Kellogg's Corporate Citizenship Fund  
Kelly Services, Inc. Foundation  
La-Z-Boy Foundation  
MASCO Corporation Foundation  
Howard Miller Foundation  
The Pistons-Palace Foundation  
Steelcase Foundation  
A.M. Todd Company Foundation  
Whirlpool Foundation  
Wolverine World Wide Foundation

## **FAMILY FOUNDATIONS**

Akers Foundation  
The Alabaster Fund  
Allen Foundation, Inc  
Americana Foundation  
Amy Foundation  
Arcus Foundation  
Baiardi Family Foundation, Inc.  
Barber Foundation  
Charles F. and Adeline L. Barth Foundation  
Bash Family Foundation, Inc.  
Mandell L. and Madeleine H. Berman Foundation  
Bingham Family Foundation  
Birtwistle Family Foundation  
The Blodgett Foundation  
John A. and Marlene L. Boll Foundation  
Bonisteel Foundation  
David A. Brandon Foundation  
Benjamin and Marion Bregi Foundation  
Hilda E. Bretzlaff Foundation  
Edalene and Ed Brown Family Foundation  
Buhr Foundation

Burnham Family Foundation  
The Campbell Fund  
Castaing Family Foundation  
Clannad Foundation  
Colina Foundation  
Julius V. and Alice G. Combs Foundation  
Conway Family Foundation  
Cook Charitable Foundation  
Cook Family Foundation  
Raymond M. and Jane E. Cracchiolo Foundation  
Peter D & Julie F Cummings Family Foundation  
Robert and Jeanine Dagenais Foundation  
M.E. Davenport Foundation  
DeRoy Testamentary Foundation  
Detroit Neurosurgical Foundation  
The DeVlieg Foundation  
Daniel and Pamela DeVos Foundation  
Dick and Betsy DeVos Foundation  
Douglas and Maria DeVos Foundation  
The Richard and Helen DeVos Foundation  
Eileen and Brian DeVries Family Foundation  
The Doan Family Foundation  
The Herbert and Junia Doan Foundation  
Dole Family Foundation  
Alden & Vada Dow Fund  
Herbert H. and Grace A. Dow Foundation  
Dryer Family Foundation  
The Duffy Foundation  
Fred A. and Barbara M. Erb Family Foundation\*  
H.T. Ewald Foundation  
George R. and Elise M. Fink Foundation  
Max M. and Marjorie S. Fisher Foundation  
Fisher-Insley Foundation  
Frey Foundation  
Friedman Family Foundation

\*New Member as of April 1, 2008



## **FAMILY FOUNDATIONS cont.**

The Rollin M. Gerstacker Foundation  
Benn and Kathleen Gilmore Foundation  
Glancy Foundation, Inc.  
Gordy Foundation, Inc.  
Granger Foundation  
Ferris Greeney Family Foundation  
Hagen Family Foundation  
Charles Stewart Harding Foundation  
James and Catherine Haveman Family Foundation  
The Hees Family Foundation  
The Edsko and Claire Hekman Foundation  
Paul B. Henry Foundation  
Heron Oaks Foundation  
Herrington-Fitch Family Foundation  
The Holley Foundation  
Robert L. and Judith S. Hooker Foundation  
Hougen Foundation  
Julius and Cynthia Huebner Foundation  
The Hurst Foundation  
Bill and Bea Idema Foundation  
Isabel Foundation  
Jennings Memorial Foundation  
Lloyd and Mabel Johnson Foundation  
Paul A. Johnson Foundation  
The Jury Foundation  
Kaufman Foundation  
Keller Foundation  
Edward and June Kellogg Foundation\*  
KINSHIP Foundation  
Kloplic Family Foundation  
James A. & Faith Knight Foundation  
The Helen Laidlaw Foundation  
The Robert C. Larson and Bonnie Ann Larson Fund  
Charles W. Loosemore Foundation  
Edward Lowe Foundation

The Lyon Foundation  
Mackey Foundation  
The Malpass Foundation  
Richard and Jane Manoogian Foundation  
Martin Family Foundation  
Peter Mason Charitable Foundation  
The Matthaei Foundation  
W.B. McCardell Family Foundation  
B.D. and Jane E. McIntyre Foundation  
C. S. and Marion F. McIntyre Foundation  
W. D. and Prudence A. McIntyre Foundation  
Molitor Family Foundation  
Frederick S. & Lezlynne P. Moore Family Foundation  
Morley Foundation  
Ruth Mott Foundation  
Henry C. and Audrienne Murray Foundation  
Allen E. and Marie A. Nickless Memorial Foundation  
The Nine Tuna Foundation  
R.E. Olds Foundation  
Paine Family Foundation  
Charles A. Parcells Foundation  
Elsa U. Pardee Foundation  
Donald and Ann Parfet Family Foundation  
Peak Street Foundation  
Pearson Family Foundation  
Joe D. Pentecost Foundation  
Karen and Drew Peslar Foundation  
The Pinney Foundation  
Plym Foundation  
Polasky Family Foundation  
Porter Family Foundation  
The Power Foundation  
The Preede Foundation  
The Meyer and Anna Prentis Family Foundation, Inc.  
Drake Quinn Family Foundation  
Rachor Family Foundation, LTD

Reid Family Foundation  
River City Foundation  
RJK Foundation  
Edward and Elyse Rogers Family Foundation  
The Ruffner Foundation  
Ghassan and Manal Saab Foundation  
The Samaritan Foundation  
Savage Foundation  
The Schalon Foundation  
The Art and Mary Schmuckal Family Foundation\*  
The Sebastian Foundation  
Sehn Foundation  
William and Sarah Seidman Foundation  
George and Elizabeth Seifert Foundation  
The Nate S. and Ruth B. Shapero Foundation  
The Shiffman Foundation  
Shubeck Mansour Foundation  
Speckhard-Knight Charitable Foundation  
St. Denys Foundation  
The Charles J. Strosacker Foundation  
The Summers Foundation, Inc.  
A. Alfred Taubman Foundation  
The Tiscornia Foundation, Inc.  
Harry A. and Margaret D. Towsley Foundation  
Jerry L. and Marcia D. Tubergen Foundation  
Turn 2 Foundation, Inc.  
Amherst and Janeth Turner Foundation  
Burton H. and Elizabeth S. Upjohn Charitable Trust  
Frederick S. Upton Foundation  
The Valenti Foundation  
W. S. and Lois VanDalson Foundation  
Wayne and Joan Webber Foundation  
The Wege Foundation  
The Wetsman Foundation  
Bill and Sally Wildner Foundation

\*New Member as of April 1, 2008



### **FAMILY FOUNDATIONS cont.**

Karen Colina Wilson Foundation  
The Matilda R. Wilson Fund  
The Ralph C. Wilson Foundation  
Isadore and Beryl Winkelman Foundation  
The Kate and Richard Wolters Foundation  
World Heritage Foundation  
Yeo Family Foundation  
The Young Foundation  
W. Tom ZurSchmiede Foundation

### **INDEPENDENT FOUNDATIONS**

James C. Acheson Foundation  
Joseph E. Beauchamp Charitable Trust  
Besser Foundation  
Guido A. and Elizabeth H. Binda Foundation  
The Carls Foundation  
Glenn D. Curtis Edmore Trust  
Dorothy U. Dalton Foundation  
Dyer-Ives Foundation  
C.K. Eddy Family Foundation  
Fair Food Foundation\*  
The John E. Fetzer Institute  
Ethel and James Flinn Foundation  
Ford Foundation  
The Gerber Foundation  
Irving S. Gilmore Foundation  
The Greater Lansing Foundation  
Luella Hannan Memorial Foundation  
Myrtle E. and William G. Hess Charitable Trust  
Samuel Higby Camp Foundation  
Hudson-Webber Foundation  
Edward F. and Irma Hunter Foundation  
Irwin Foundation  
Paul C. Johnson Foundation  
The Kantzler Foundation

Chaim, Fanny, Louis, Benjamin  
& Anne Kaufman Trust  
W.K. Kellogg Foundation  
The Kresge Foundation  
The Loutit Foundation  
McCurdy Memorial Scholarship Foundation  
McGregor Fund  
Metro Health Foundation  
Michigan State Medical Society Foundation  
The Miller Foundation  
Louise Tuller Miller Trust  
Charles Stewart Mott Foundation  
The Nokomis Foundation  
Amos Nordman Charitable Trust  
The Pokagon Fund\*  
Herbert and Elsa Ponting Foundation  
Ramser-Morgan Foundation  
Milton M. Ratner Foundation  
Harold and Carolyn Robison Foundation  
Bill and Vi Sigmund Foundation  
The Skillman Foundation  
Slemons Foundation, Inc.  
St. Clair Foundation  
Maurice and Dorothy Stubnitz Foundation  
The Keith W. Tantlinger Foundation  
Mary Thompson Foundation  
Harold and Grace Upjohn Foundation  
W.E. Upjohn Institute for Employment Research  
Vicksburg Foundation  
John W. and Rose E. Watson Scholarship Foundation  
James A. Welch Foundation  
John and Elizabeth Whiteley Foundation  
Harvey Randall Wickes Foundation  
Wickson-Link Memorial Foundation

### **OUT-OF-STATE ASSOCIATES**

Ball Brothers Foundation  
Edyth Bush Charitable Foundation, Inc.  
Fifth Third Foundation\*  
F.B. Heron Foundation  
John S. and James L. Knight Foundation  
LaGrange County Community Foundation  
The Seabury Foundation  
Seevers Family Foundation

### **PUBLIC FOUNDATIONS**

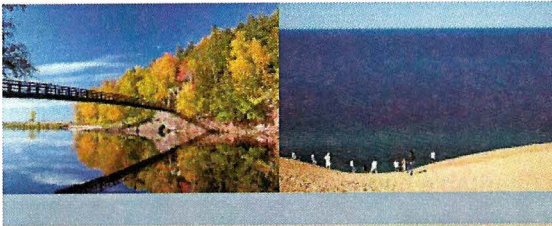
Community Foundation Alliance of Calhoun County  
Detroit Youth Foundation  
Grand Rapids Jaycees Foundation  
Great Lakes Center for Youth Development  
Great Lakes Fishery Trust  
Jewish Federation of Metropolitan Detroit  
The Jewish Fund  
Jewish Women's Foundation of  
Metropolitan Detroit  
Library of Michigan Foundation  
Lions of Michigan Service Foundation, Inc.  
McKinley Foundation  
Michigan Masonic Charitable Foundation\*  
Michigan State Bar Foundation  
Michigan Women's Foundation  
Rotary Charities of Traverse City  
Rotary District 6360 Foundation  
United Jewish Foundation

### **PUBLIC FOUNDATION**

### **DONOR-ADVISED FUNDS**

Shaevsky Family Foundation





## CMF main office

One South Harbor Ave., Suite 3  
Grand Haven, MI 49417  
p 616.842.7080 f 616.842.1760

Robert S. Collier  
President & CEO

Dana Linnane  
Public Policy Fellow

Vicki J. Rosenberg  
Vice President Education,  
Communications &  
External Relations

Donnell S. Mersereau  
Director, Community  
Foundations

David R. Lindberg  
Vice President of Finance  
& Administration

Rebecca L. Noricks  
Communications  
Manager

Jennifer Bodrie  
Administrative Assistant

Tammie S. TenBroeke  
Payroll-Benefits  
Administrator

Susan J. Cuddington  
Assistant to the President

Laura L. TerHaar  
Accounts Payable  
Administrator

Barbara A. Dryer  
Information Services  
Specialist & Grants  
Manager

Mary Trimbach  
Data Applications  
Specialist

Jeri L. Fischer  
Director of Membership  
& Special Projects

Consultant:  
Michael B. Gallagher  
Editorial Consultant

Kathleen N. Ginocchio  
Director of Technology

Michael Goorhouse  
Program Associate  
Youth Philanthropy

## CMF SE Michigan office

100 Talon Centre Drive, Suite 150, Detroit, MI 48207  
p 313.566.2444 f 313.566.2445

Susan B. Howbert  
Director, Family Philanthropy

Terreance Coleman  
Program Associate, Community Foundations

Beverly Spriggs  
Program Associate

## office of the foundation liaison

PO Box 30013, 111 South Capital Ave.  
Lansing, MI 48909  
p 517.335.4545 f 517.335.7899

Karen Aldridge-Eason  
Foundation Liaison

Maura Dewan  
Program Associate

Amanda Collins  
Administrative Assistant

## CMF web sites

[michiganfoundations.org](http://michiganfoundations.org)  
[forgoodforever.org](http://forgoodforever.org)  
[youthgrantmakers.org](http://youthgrantmakers.org)

## michigan aids fund

21700 Northwestern Hwy., Suite 1150  
Southfield, MI 48075  
p 248.395.3244 f 248.395.2315

David Coulter  
Interim Executive  
Director

Dwain Bridges  
Project Coordinator

Jonathan Davis  
Program Director

James Matthews  
Program Director

Jerelle Moseley  
Project Assistant

Terry Ryan  
Program Director

Jeremy Toney  
Coordinator